

YOUR 2020 GUIDE TO RECYCLING AND SOLID WASTE COLLECTION & DISPOSAL IN LACEY TOWNSHIP

REDUCE



REUSE



RECYCLE

RESTORE



REPLENISH



RENEW



OUR PLACE  **OUR PLANET**  **OUR RESPONSIBILITY**

LACEY TOWNSHIP CALENDAR INDEX

| | |
|--|---------|
| Municipal Departments, Phone Extensions, Meeting Schedules, Assistance Programs, Other Phone Numbers | Page 2 |
| Meet Your 2020 Township Committee | Page 3 |
| Trash Collection at Curbside, find out what is acceptable for curbside collection | Page 29 |
| Recycling Collection at Curbside | Page 30 |
| Recycling Collection Zone Map | Page 31 |
| Recycling Center Information | Page 32 |
| Other Recycling/Disposal Facilities Beyond The Curb | Page 33 |
| Recycle Coach App | Page 34 |
| Solutions to Stormwater Pollution | Page 35 |

MUNICIPAL DEPARTMENTS INFORMATION

The Municipal Building is located at 818 Lacey Road, Forked River, NJ 08731
 The Mailing Address for ALL OFFICES is the same: 818 Lacey Rd, Forked River, NJ 08731
 Main Telephone Number: 609-693-1100

The following Offices are located in the Municipal Building and can be reached at the phone extensions listed below:

| | |
|------------------------|------|
| Administration | 2235 |
| Code Enforcement | 2249 |
| Court Office | 2262 |
| Finance | 2294 |
| Municipal Clerk | 2200 |
| Tax Collector | 2210 |
| Tax Assessor | 2242 |

The Police Department is located at 808 Lacey Road, Forked River, NJ 08731

| | |
|--|--------------|
| Police Main Number | 609-693-6636 |
| In the event of an emergency - Police/Fire/EMS | 911 |

The Public Works Department is located at 820 Municipal Lane, Forked River
 609-693-1100 ext.2301

The Recreation Department is located on Veterans Way, behind the Police Department
 609-693-1100 ext.2203

The Municipal Alliance is also located in the Recreation Building at ext. 2217

Community Development Building is located at 124 So. Main Street, Forked River

Lacey Municipal Utilities Authority - Water & Sanitary Sewer - 609-693-8188

The LMUA is located on R. Kennedy Blvd., Forked River
 For Water or Sanitary Sewer Emergencies after regular business hours,
 please call Lacey Police at 609-693-6636.

MEETING SCHEDULES

Meetings are held in the Municipal Building unless otherwise noted.

| | | |
|-------------------------------------|--|---------|
| Township Committee | Second & Fourth Thursday of each month | 7:00 PM |
| Zoning Board | First Monday of each month | 7:00 PM |
| Board of Health..... | Second Wednesday of each month | 7:00 PM |
| Planning Board..... | Second Monday of each month | 7:00 PM |
| Juvenile Conference Committee | Third Tuesday of each month | 6:30 PM |
| Municipal Alliance Committee | Fourth Monday of each month | 7:00 PM |

(In Recreation Building)

OTHER PHONE NUMBERS

| | |
|---|----------------|
| Forked River Post Office | (609) 693-2334 |
| Lanoka Harbor Post Office..... | (609) 693-2373 |
| Lacey Board of Education..... | (609) 971-2000 |
| Ocean County Library - Lacey Branch | (609) 693-8566 |
| Lacey EMS | (609) 693-9510 |
| Lanoka Harbor EMS | (609) 693-2340 |

ASSISTANCE PROGRAMS

| | | |
|-------------------------------------|---|--|
| Ocean Ride | Transportation Main Number | (732) 736-8989 |
| | Southern Ocean County | Toll Free 1 (877) 929-2082 |
| | Hearing Impaired | Dial 711 for NJ Relay System |
| Lacey Food Assistance Program | | (609) 693-1100 Ext. 2239 |
| Veteran's Assistance: Vetwork..... | | (609) 971-7613 |
| NJ State Programs | Board of Social Services | Main Office (732) 349-1500 |
| | | Southern Satellite Office (609) 242-6100 |
| | PAAD | 1 (800) 792-9745 |
| | Medicaid/Family Care | 1 (800) 701-0710 |
| | Ocean County Senior Services | (732) 929-2091 |
| | Y-Move Senior Resource Service..... | (609) 389-0919 |
| | Visiting Homemaker Service | (732) 244-5565 |
| | St. Francis Community Center (Berkeley Senior Outreach) | (732) 244-9600 |
| | Ocean County Court Offices..... | (732) 244-2121 |
| | Ocean County Court Civil Division..... | (732) 929-2042 |
| | NJ Homestead Benefit | 1 (877) 658-2972 |



For Recycling to be successful, it requires the support of everyone. When you think of recycling the first thing that comes to mind is newspaper, aluminum cans, steel and cardboard. There are many kinds of materials to recycle like glass, paper, metal, plastic, tires, textiles, lumber, cars and car batteries. Biodegradable waste such as food or garden are also recyclable materials. Single Stream Materials can be taken to a drop-off collection center such as our facility at the Lacey Public Works Complex, or can be recycled in our curbside collection, other non-traditional materials can be recycled at buy-back centers or other Markets listed in this calendar. Few people realize that their local curbside collection program is only the beginning of a recycling loop.

The strategies like recycling of trash is crucial to reducing pollution on a large scale. Recycling isn't a new concept in the modern era, we have always been finding new uses for items. Recycling does not always save money immediately, it provides long lasting benefits because it conserves our natural resources while saving energy and reducing pollution.

In fact, recycling is not just a matter of recovering recyclable material; it's a total economic system. We all can assist the earth enormously by appropriately recycling our household waste.

In 2019 we renewed our commitment to Recycling Right and are committed to educating ourselves on the proper methods of Recycling. Lacey Township has been successful with properly turning around our methodology and we owe that to each of our residents who listened, learned and re-educated themselves. We have not had one truck load of recycled product turned away from the disposal site this year. Lacey Township continues to remain a leader in the County in recycling.

In Lacey, the governing body, continues to evaluate Township performance on the three Ps of people, planet, and profits, the governing body is working to ensure that the Township moves forward in a way that benefits all residents. The first priority of the Township is to deliver a high level of service to its residents, businesses, and visitors, the "people" in the framework. Next, the Township, along with its residents, should be good stewards of the environment, the "planet" portion. While the first two Ps are important factors, without a strong financial tax base or "profits," they cannot be fully addressed. That is why it is important to continue to have proper and desired growth in the right parts of town to strengthen our local business districts and neighborhoods.

The governing body is focused on continuing the Township's strong record of providing excellent services while controlling costs. Building on this strong fiscal foundation, they are committed to working to increase sustainable practices in the Township, strengthening the local business community, and celebrating the wonderful diversity that can be found within the Township.

Lacey Life: Live it, Love it, Be Part of it!

Steven Kennis, Mayor Peter Curatolo, Deputy Mayor

Mark Dykoff, Tim McDonald and Nicholas Juliano Committee Members

OCEAN COUNTY SINGLE STREAM RECYCLING LACEY TOWNSHIP



**REMOVE
ALL CAPS
LIDS &
PUMPS**

**EMPTY
ALL
LIQUIDS
& FOOD**

NO SHREDDED PAPER • PLASTIC BAGS • YOGURT or FOOD CONTAINERS
STYROFOAM • PHONE BOOKS (RECYCLE SEPARATELY) • CHIPBOARD
(TISSUE or FOOD BOXES) • PAPER TOWELS or TOILET PAPER TUBES

OCEAN COUNTY RECYCLING CURBSIDE Q & A

QUESTION: Why is recycling so confusing?

ANSWER: Recyclable items accepted in curbside collection/recycling centers vary from each State and County. What is accepted/not accepted may be different in Ocean County.

SOLUTION: Use the Ocean County Single Stream Recycling flyer as your guide to curbside recycling. Contact your town's recycling coordinator. Download the FREE Recycle Coach App to your smartphone.

QUESTION: Yogurt and food containers have a number on the bottom so they're recyclable, right?

ANSWER: The numbers (1-7) identify the type of plastic in the product. Not all plastics are recyclable.

SOLUTION: Plastic containers where the neck is smaller than the base are recycled in Ocean County.

QUESTION: Why do we have to remove caps, lids & pumps from plastic containers?

ANSWER: They are made from a different type of plastic and can contaminate the load.

SOLUTION: Remove these when you recycle plastic containers. You can leave the plastic ring on.

QUESTION: Why can't cereal, tissues or other food boxes be recycled? Aren't they cardboard?

ANSWER: These boxes are made from "chipboard/paperboard" which is not recycled in Ocean County.

SOLUTION: Recycle dry, folded corrugated cardboard (wave/waffle pattern) like shipping boxes. Chipboard, paperboard, paper towel and toilet paper rolls can be recycled in a compost bin.

QUESTION: Why can't I put shredded paper in my curbside recycling?

ANSWER: Shredded paper (loose or bagged) is too small to sort at recycling centers. It flies like confetti, landing on other recyclables. If wet, it sticks to everything.

SOLUTION: Bring shredded paper to the Northern or Southern Recycling Center or let the County shred your documents at one of our FREE Document Shredding Events.

QUESTION: Can pizza boxes be recycled?

ANSWER: Maybe. Cardboard pizza boxes are recyclable if there is no food or grease stuck to them.

SOLUTION: Tear off the lid, which is usually grease free. Toss the greasy bottom in the trash.

JANUARY 2020

| Sunday | Monday | Tuesday | Wednesday | Thursday | Friday | Saturday |
|--|---|---|--|--|--|-----------|
|  <p>Curbside collection of live Christmas Trees will begin on Thursday, January 2nd. Place your live Christmas Trees at the curb no earlier than January 2nd and on your regular Recycling day. PLEASE remove all tinsel, lights and garland.</p> <p>Christmas Tree Collection ends on Friday, January 10th. If you were not ready to part with your Christmas tree during our collection time, please bring it into the Recycling Center anytime during normal operating hours.</p> | | | <p>1</p> <p>MUNICIPAL OFFICES & RECYCLING CENTER CLOSED NO TRASH COLLECTION NO RECYCLING COLLECTION</p> <p>New Year's Day</p> | <p>2</p> <p>Zone 2 Recycling Collection</p> <p>Zone 5 Recycling Collection</p> <p>CURBSIDE COLLECTION OF CHRISTMAS TREES BEGINS</p>  | <p>3</p> <p>Zone 1 Recycling Collection</p>  | <p>4</p> |
| | <p>5</p> <p>Zone 3 Recycling Collection</p>  | <p>6</p> <p>Zone 4 Recycling Collection</p>  | <p>7</p> <p>Zone 5 Recycling Collection</p>  | <p>8</p> <p>Zone 2 Recycling Collection</p>  | <p>9</p> <p>Zone 1 Recycling Collection</p> <p>CURBSIDE COLLECTION OF CHRISTMAS TREES END</p>  | <p>10</p> |
| <p>12</p> <p>Zone 3 Recycling Collection</p> | <p>13</p> <p>Zone 4 Recycling Collection</p> | <p>14</p> <p>Zone 5 Recycling Collection</p> | <p>15</p> <p>Zone 2 Recycling Collection</p> <p>TAX LIEN SALE</p> | <p>16</p> <p>Zone 1 Recycling Collection</p> | <p>17</p> | <p>18</p> |
| <p>19</p> <p>Zone 3 Recycling Collection</p> <p>MUNICIPAL OFFICES & RECYCLING CENTER CLOSED NO TRASH COLLECTION</p> <p>Martin Luther King, Jr. Day</p> | <p>20</p> <p>Zone 4 Recycling Collection</p> | <p>21</p> <p>Zone 5 Recycling Collection</p> | <p>22</p> <p>Zone 2 Recycling Collection</p> | <p>23</p> <p>Zone 1 Recycling Collection</p> | <p>24</p> | <p>25</p> |
| <p>26</p> <p>Zone 3 Recycling Collection</p> | <p>27</p> <p>Zone 4 Recycling Collection</p> | <p>28</p> <p>Zone 5 Recycling Collection</p> | <p>29</p> <p>Zone 2 Recycling Collection</p> | <p>30</p> <p>Zone 1 Recycling Collection</p> | <p>31</p> | |

Are you a Wishful Recycler?

Wishful recyclers toss the wrong items into curbside recycling bins hoping they will be recycled.



Wishful recycling damages machinery, causes fires at recycling centers and ends up being sent to the landfill.



FEBRUARY 2020

| Sunday | Monday | Tuesday | Wednesday | Thursday | Friday | Saturday |
|--|---|-----------------------------|---|-----------------------------|--|------------------------------|
| ACCEPTED METHODS OF TAX PAYMENT <ul style="list-style-type: none"> • ONLINE at our website: www.laceytownship.org* • Our TOLL FREE TELEPHONE NUMBER: 1-866-989-9511* • ACH: Automatic Check Withdrawal (after a short form is filled out at our office) • IN PERSON at the Tax Office Window: With Cash, Check, Money Order or Credit Card* (MasterCard, Visa, Discover or American Express accepted) | | | | | | 1 |
| 2 | 3 | 4 | 5 | 6 | 7 | 8 |
| Groundhog Day | Zone 3 Recycling Collection 1ST QUARTER REAL ESTATE TAX DUE | Zone 4 Recycling Collection | Zone 5 Recycling Collection | Zone 2 Recycling Collection | Zone 1 Recycling Collection | |
| | | | | | | |
| 9 | 10 | 11 | 12 | 13 | 14 | 15 |
| | Zone 3 Recycling Collection GRACE PERIOD ENDS LAST DAY to pay Real Estate Tax without interest | Zone 4 Recycling Collection | Zone 5 Recycling Collection MUNICIPAL OFFICES & RECYCLING CENTER CLOSED Abraham Lincoln's Birthday | Zone 2 Recycling Collection | Zone 1 Recycling Collection Valentine's Day | |
| 16 | 17 | 18 | 19 | 20 | 21 | 22 |
| | Zone 3 Recycling Collection MUNICIPAL OFFICES & RECYCLING CENTER CLOSED NO TRASH COLLECTION President's Day | Zone 4 Recycling Collection | Zone 5 Recycling Collection | Zone 2 Recycling Collection | Zone 1 Recycling Collection | George Washington's Birthday |
| 23 | 24 | 25 | 26 | 27 | 28 | 29 |
| | Zone 3 Recycling Collection | Zone 4 Recycling Collection | Zone 5 Recycling Collection Ash Wednesday | Zone 2 Recycling Collection | Zone 1 Recycling Collection | |

8 WAYS TO GO GREEN IN THE SPRING

1 - DECLUTTER YOUR LIFE Get rid of all the stuff...that is everything you don't want or use on a daily basis. The task may be daunting, but ask yourself these simple questions to help sort your stuff. *Should I keep it? Should I donate it? Should I recycle it? Should I trash it?*

2 - SPRING CLEAN THE NATURAL WAY Choose "green" or "natural" cleaning products when conquering those countertops and hardwood floors. Want to save a bit of money going "green?" Make your own natural cleaners at home with handy household products. **Spray Cleaner:** 2 cups water, 1/4 cup white vinegar, 1/4 tsp. each of tea tree and lavender oils. Combine and store in a reusable spray bottle. **Deodorizing Cleaning:** Mix one part vinegar and one part water in a spray bottle to help with countertops, floors, stovetops, and other appliances. Scrub dishes with a lemon that has been cut in half and sprinkled with baking soda on the flat side.

3 - GO FOR AN ENERGY UPGRADE Replace incandescent light bulbs with efficient CFLs or LEDs. Install a programmable thermostat that automatically adjusts your home's temperature. Shade your windows and save on heating and cooling costs.

4 - WASH YOUR DIRTY CAR While you think you're saving money by handwashing your car at home, commercial car washes use half the water than when washing your car at home. Car washes also reuse water and send water to treatment centers instead of nearby lakes and streams.

5 - NO MORE EXCUSES, START YOUR COMPOST Take your kitchen scraps and turn them into usable garden soil additive! Food scraps, grass clippings, plant cuttings, dry leaves, hay and straw, simple paper products (newspaper, cardboard, etc.), crushed egg shells, coffee grounds, sawdust and wood clippings.

6 - PLANT THE GARDEN YOU'VE ALWAYS WANTED Want the freshest, most affordable, organic vegetables and save money while enjoying them? Start your own backyard garden. A little work will go along a way!

7 - GET YOUR FITNESS ON Studies show that physically active individuals save on medical costs, compared to those who don't exercise. American hospitals generate approximately 6,600 tons of waste daily. By staying healthy and active, you can help lessen the amount of waste hospitals create.

8 - HAVE A COOKOUT Throw a good old fashioned cookout and settle the debate between charcoal and propane. Which one is cheaper, faster? More efficient? Drum roll, please..... Propane! Propane is dramatically more efficient in production and use during cooking over charcoal. When purchasing a propane tank, make sure there is a trade-in option. Most retailers will let you trade an empty tank for a decent discount.



MARCH 2020

| Sunday | Monday | Tuesday | Wednesday | Thursday | Friday | Saturday |
|--|---|--|-----------------------------------|--|-----------------------------------|----------|
| 1 | 2 Zone 3 Recycling Collection Recipients of Property Tax Deduction Must File Post Year Income Statements with the Tax Collector PD-5 Due to Tax Office READ ACROSS AMERICA DAY | 3 Zone 4 Recycling Collection | 4 Zone 5 Recycling Collection | 5 Zone 2 Recycling Collection | 6 Zone 1 Recycling Collection | 7 |
| 8 Daylight Savings Time Starts Set Clocks Ahead 1 Hour | 9 Zone 3 Recycling Collection Purim | 10 Zone 4 Recycling Collection | 11 Zone 5 Recycling Collection | 12 Zone 2 Recycling Collection | 13 Zone 1 Recycling Collection | 14 |
| 15 | 16 Zone 3 Recycling Collection | 17 Zone 4 Recycling Collection St. Patrick's Day | 18 Zone 5 Recycling Collection | 19 Zone 2 Recycling Collection First Day of Spring | 20 Zone 1 Recycling Collection | 21 |
| 22 | 23 Zone 3 Recycling Collection | 24 Zone 4 Recycling Collection | 25 Zone 5 Recycling Collection | 26 Zone 2 Recycling Collection | 27 Zone 1 Recycling Collection | 28 |
| 29 | 30 Zone 3 Recycling Collection | 31 Zone 4 Recycling Collection | | | | |

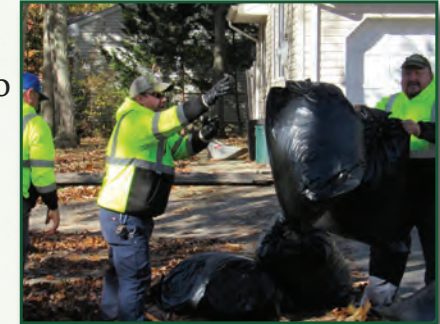
April

SPRING LEAF COLLECTION – 2 CYCLES

THE 1ST CYCLE BEGINS MONDAY, APRIL 13TH AND
THE 2ND & FINAL CYCLE BEGINS MONDAY, APRIL 27TH

THE RULES:

- ⇒ Place your leaves at curbside prior to the FIRST DAY OF EACH CYCLE.
- ⇒ Leaves must be bagged in biodegradable paper bags, plastic bags, or placed in containers no larger than 32 gallons.
- ⇒ **NO** tree branches, acorns or other debris – LEAVES ONLY.
- ⇒ If we come to your street and your leaves were not out on the first collection cycle, we will not be back until the 2nd cycle begins.
- ⇒ It takes the Public Works Department about 2 weeks to complete each cycle.



After the 2nd Collection, Residents are required to bring their leaves into the Recycling Center during normal operating hours.

LEAVES are Mandated Recyclable in the State of NJ, Ocean County and Lacey Township – They are **PROHIBITED** from being **LANDFILLED**.

What do we do with the Leaves we collect? We Compost them. What is Compost?

Compost is the natural breakdown (decomposition) of organic materials. It is practiced by individuals, schools, communities and municipalities, composting offers a unique opportunity to contribute to, and directly benefit from, part of the solid waste solution: RECYCLING.

Why Compost?

Compost has numerous benefits:

- ⇒ It can be used as a mulch around trees and shrubs or it can be mixed with soil to improve soil quality.
- ⇒ The Composting of organic materials reduces our municipal solid waste volume and disposal costs and yields humus-a dark, soil-like material known as compost.
- ⇒ Compost, when available, is given back to residents – free of charge, just come into the Recycling Center with your shovel and pail and take what you like.

Interested in learning more about home composting? Contact Sandra Blain-Snow, 732-506-5047 ext. 3098
Ocean County Dept. of Solid Waste Mgmt.

APRIL 2020

| Sunday | Monday | Tuesday | Wednesday | Thursday | Friday | Saturday |
|---|---|-----------------------------------|--|-----------------------------------|---|----------|
| | | | 1 Zone 5 Recycling Collection | 2 Zone 2 Recycling Collection | 3 Zone 1 Recycling Collection | 4 |
| | | | April Fool's Day | | | |
| 5 Palm Sunday | 6 Zone 3 Recycling Collection | 7 Zone 4 Recycling Collection | 8 Zone 5 Recycling Collection | 9 Zone 2 Recycling Collection | 10 Zone 1 Recycling Collection MUNICIPAL OFFICES & RECYCLING CENTER CLOSED | 11 |
| | | | | Passover Begins | Good Friday | |
| 12 RECYCLING CENTER CLOSED | 13 Zone 3 Recycling Collection  SPRING LEAF COLLECTION 1st Cycle Begins | 14 Zone 4 Recycling Collection | 15 Zone 5 Recycling Collection | 16 Zone 2 Recycling Collection | 17 Zone 1 Recycling Collection | 18 |
| Easter | | | Tax Day | Last Day of Passover | | |
| 19 FORKED RIVER MOUNTAIN COALITION CLEAN-UP | 20 Zone 3 Recycling Collection | 21 Zone 4 Recycling Collection | 22 Zone 5 Recycling Collection | 23 Zone 2 Recycling Collection | 24 Zone 1 Recycling Collection | 25 |
| | | | Earth Day Administrative Professional's Day | | Arbor Day | |
| 26 | 27 Zone 3 Recycling Collection  SPRING LEAF COLLECTION 2nd & Final Cycle Begins | 28 Zone 4 Recycling Collection | 29 Zone 5 Recycling Collection | 30 Zone 2 Recycling Collection | | |

2020 Census at a Glance

The census is much more than just a head count. It provides a picture of our nation that helps determine where to build new schools, hospitals, and businesses; how federal funding is distributed; and how congressional seats are apportioned. It also helps us see how our communities have changed over time. That's why an accurate count is so important.



Counting Everyone

Participating in the census is required by law, even if you recently completed another survey from the Census Bureau. A complete and accurate count is critical for you and your community, because the results of the 2020 Census will affect community funding, congressional representation, and more.

Questions Asked

The 2020 Census is easy. The questions are simple.

As required by the Census Act, the U.S. Census Bureau submitted a list of questions to Congress on March 29, 2018. Based on those questions, the 2020 Census will ask:

- **How many people are living or staying at your home on April 1, 2020.** This will help us count the entire U.S. population and ensure that we count people according to where they live on Census Day.
- **Whether the home is owned or rented.** This will help us produce statistics about homeownership and renting. The rates of homeownership serve as one indicator of the nation's economy. They also help in administering housing programs and informing planning decisions.
- **About the sex of each person in your home.** This allows us to create statistics about males and females, which can be used in planning and funding government programs. This data can also be used to enforce laws, regulations, and policies against discrimination.
- **About the age of each person in your home.** The U.S. Census Bureau creates statistics to better understand the size and characteristics of different age groups. Agencies use this data to plan and fund government programs that support specific age groups, including children and older adults.
- **About the race of each person in your home.** This allows us to create statistics about race and to provide other statistics by racial groups. This data helps federal agencies monitor compliance with anti-discrimination provisions, such as those in the Voting Rights Act and the Civil Rights Act.
- **About whether a person in your home is of Hispanic, Latino, or Spanish origin.** These responses help create statistics about this ethnic group. This is needed by federal agencies to monitor compliance with anti-discrimination provisions, such as those in the Voting Rights Act and the Civil Rights Act.
- **About the relationship of each person in your home.** This allows the Census Bureau to create estimates about families, households, and other groups. Relationship data is used in planning and funding government programs that support families, including people raising children alone.

The Census Will Never Ask Certain Questions

During the 2020 Census, the Census Bureau will never ask you for:

- Your Social Security number.
- Money or donations.
- Anything on behalf of a political party.
- Your bank or credit card account numbers.

If someone claiming to be from the Census Bureau contacts you via email or phone and asks you for one of these things, it's a scam, and you should not cooperate.

MAY 2020

| Sunday | Monday | Tuesday | Wednesday | Thursday | Friday | Saturday |
|---|--|---|------------------------------------|------------------------------------|--|--|
| ACCEPTED METHODS OF TAX PAYMENT | | | | | 1 | 2 |
| <ul style="list-style-type: none"> ONLINE at our website: www.laceytownship.org* Our TOLL FREE TELEPHONE NUMBER: 1-866-989-9511* ACH: Automatic Check Withdrawal (after a short form is filled out at our office) IN PERSON at the Tax Office Window: With Cash, Check, Money Order or Credit Card* (MasterCard, Visa, Discover or American Express accepted) <p>*A Convenience Fee of 2.69% will be charged for payments made ONLINE, by TELEPHONE, or with Credit Card IN PERSON at the Tax Window Office.</p> | | | | | Zone 1 Recycling Collection 2ND QUARTER REAL ESTATE TAX DUE BEACH BADGES are available for sale at the Recreation Office | RABIES CLINIC Lacey DPW Garage RAIN DATE: May 9, 2020 |
| 3 | 4 | 5 | 6 | 7 | 8 | 9 |
| | Zone 3 Recycling Collection | Zone 4 Recycling Collection | Zone 5 Recycling Collection | Zone 2 Recycling Collection | Zone 1 Recycling Collection | |
| | | Cinco De Mayo | | | | |
| 10 | 11 | 12 | 13 | 14 | 15 | 16 |
| | Zone 3 Recycling Collection | Zone 4 Recycling Collection | Zone 5 Recycling Collection | Zone 2 Recycling Collection | Zone 1 Recycling Collection | |
| Mother's Day | GRACE PERIOD ENDS LAST DAY to pay Real Estate Tax without interest | LAST DAY to Register to Vote for Primary Election | | | | Armed Forces Day |
| 17 | 18 | 19 | 20 | 21 | 22 | 23 |
| | Zone 3 Recycling Collection | Zone 4 Recycling Collection | Zone 5 Recycling Collection | Zone 2 Recycling Collection | Zone 1 Recycling Collection | |
| | | | | | | |
| 24 | 25 | 26 | 27 | 28 | 29 | 30 |
| | Zone 3 Recycling Collection | Zone 4 Recycling Collection | Zone 5 Recycling Collection | Zone 2 Recycling Collection | Zone 1 Recycling Collection | |
| | MUNICIPAL OFFICES & RECYCLING CENTER CLOSED NO TRASH COLLECTION | | | | | |
| 31 |  Memorial Day | County Deadline for Receipt of Absentee Ballot Applications | | | | |



Did you know the average American uses 100 gallons of water per day? In the summer, outdoor water use can more than double! So, what can be done to conserve this nonrenewable resource? We can reduce our water use by as much as 30% by taking a few simple steps, both inside and outside your home.

While water conservation is important all the time, it is especially important during times of Drought. Visit www.njdrought.org to determine if your area is under a drought watch or warning, the scientific data collected to determine drought status, and additional ideas for water conservation in your home.

The New Jersey Department of Environmental Protection is committed to protecting the future of our water supply through water-efficient practices, products, and services. For more information on water conservation, contact the Division of Water Supply & Geoscience at 609-292-7219.

How Much Water Do You Use In A Day???

- ♻ Household faucet: 3-5 gallons a minute
- ♻ Shower: 5-10 gallons a minute
- ♻ Tub bath: 50 gallons, if full
- ♻ Toilet flushing: 5-7 gallons each time
- ♻ Dishwasher: 15-25 gallons
- ♻ Washing Machine: 35 gallons
- ♻ Lawn Watering: 35 gallons per ½ acre
- ♻ Dripping faucet: 1,000 or more gallons/year

Clean Drinking Water is a vanishing resource – Do what you can to conserve as much as possible.

JUNE 2020

| Sunday | Monday | Tuesday | Wednesday | Thursday | Friday | Saturday |
|--------------------|-----------------------------------|--|--|-----------------------------------|-----------------------------------|--|
| | 1 Zone 3 Recycling Collection | 2 Zone 4 Recycling Collection PRIMARY ELECTION | 3 Zone 5 Recycling Collection | 4 Zone 2 Recycling Collection | 5 Zone 1 Recycling Collection | 6 |
| 7 | 8 Zone 3 Recycling Collection | 9 Zone 4 Recycling Collection | 10 Zone 5 Recycling Collection | 11 Zone 2 Recycling Collection | 12 Zone 1 Recycling Collection | 13 |
| 14 Flag Day | 15 Zone 3 Recycling Collection | 16 Zone 4 Recycling Collection | 17 Zone 5 Recycling Collection | 18 Zone 2 Recycling Collection | 19 Zone 1 Recycling Collection | 20 OPENING DAY BEACH BASH 12 Noon - Lake Barnegat Beach First Day of Summer |
| 21 Father's Day | 22 Zone 3 Recycling Collection | 23 Zone 4 Recycling Collection | 24 Zone 5 Recycling Collection | 25 Zone 2 Recycling Collection | 26 Zone 1 Recycling Collection | 27 |
| 28 | 29 Zone 3 Recycling Collection | 30 Zone 4 Recycling Collection | SUMMER IS HERE! Beach Badges are available for sale to residents and can be purchased at the Recreation Office. Badges are \$5 each for residents and children 5 years of age or older; children under 5 do not require badges. Lakes are staffed with lifeguards from 10am to 4pm daily from June 16th through Labor Day. <i>Don't forget to sign up for our Learn to Swim & Junior Lifeguard Program. Contact the Recreation Department for all registration information. (609) 693-1100 ext. 2203</i> | | | |
| | | |  Jersey Fresh Farmers Market sponsored by the Lacey Township Recreation Department. Weekly farmers market featuring locally grown fruits, vegetables, fresh baked items, and many specialty items. Market runs from Mid-June to Mid-September. Location to be announced. For more information please contact the Recreation Department at 609-693-1100 Ext 2203. | | | |

Do your part to make our **Oceans** **PLASTIC-FREE!**



1

**Switch to a reusable mug
for your morning coffee**



2

**Skip the plastic straws &
disposable utensils**



3

**Say no to plastic bottles;
carry a reusable water bottle**



4

**Refuse single use plastic bags;
bring your own bag**

LEARN ABOUT NJ BEACHES VISIT WWW.NJBEACHES.ORG



JULY 2020

| Sunday | Monday | Tuesday | Wednesday | Thursday | Friday | Saturday |
|---|-----------------------------|-----------------------------|-----------------------------|-----------------------------|-----------------------------|---|
|  <p>Jersey Fresh Farmers Market sponsored by the Lacey Township Recreation Department. Weekly farmers market featuring locally grown fruits, vegetables, fresh baked items, and many specialty items. Market runs from Mid-June to Mid-September. Location to be announced. For more information please contact the Recreation Department at 609-693-1100 ext 2203.</p> | | | 1 | 2 | 3 | 4 |
| | | | Zone 5 Recycling Collection | Zone 2 Recycling Collection | Zone 1 Recycling Collection | FIREWORKS 7:30 PM - Lacey High School Rain date - July 5th MUNICIPAL OFFICES & RECYCLING CENTER CLOSED NO TRASH COLLECTION |
| 5 | 6 | 7 | 8 | 9 | 10 | 11 |
| | Zone 3 Recycling Collection | Zone 4 Recycling Collection | Zone 5 Recycling Collection | Zone 2 Recycling Collection | Zone 1 Recycling Collection | |
| 12 | 13 | 14 | 15 | 16 | 17 | 18 |
| | Zone 3 Recycling Collection | Zone 4 Recycling Collection | Zone 5 Recycling Collection | Zone 2 Recycling Collection | Zone 1 Recycling Collection | |
| 19 | 20 | 21 | 22 | 23 | 24 | 25 |
| | Zone 3 Recycling Collection | Zone 4 Recycling Collection | Zone 5 Recycling Collection | Zone 2 Recycling Collection | Zone 1 Recycling Collection | |
| 26 | 27 | 28 | 29 | 30 | 31 | |
| | Zone 3 Recycling Collection | Zone 4 Recycling Collection | Zone 5 Recycling Collection | Zone 2 Recycling Collection | Zone 1 Recycling Collection | |

SOLID WASTE COLLECTION AT CURBSIDE

Solid Waste Collection is provided by Meadowbrook Industries.

Preparation. All garbage and rubbish containing food waste shall be kept in leakproof, commercially available containers with tight-fitting lids or covers and shall be kept covered at all times, unless the contents of same are being removed or contents are being placed therein. Plastic bags or any other receptacle which does not fit the above description shall not be used for garbage and rubbish containing food waste.

Container Size. 32 gallon container with a lid and serviceable handles. Containers may not be more than 32 gallons in size and together with its contents may not weigh more than 50 lbs. due to the fact that garbage collection is done manually.

Collection. Containers must be placed at curbside or adjacent to the road if no curb exists, in a place which is visible and easily accessible for collectors, either the night before or by 6:00 am on the day of collection and removed within 24 hours after collection. The Contractor is not required to come back and pick up your garbage if it is set out late and the truck has already passed through your area.

Responsibility. If your garbage has spilled over and onto the street prior to collection, it is your responsibility to clean it up. The Contractor is not responsible for cleaning up garbage that has blown over and spilled out onto the street or placed out in plastic bags and torn open by animals.

Violation. Any container that does not comply with the above specifications or creates a hazard or danger to the collectors shall be affixed with a red tag. In the event that a container is affixed with a red tag, it shall be a violation to utilize that container for future disposal of garbage, rubbish or other refuse.

32 GALLON CONTAINER STYLES



Plastic Container with
Handles and Lid



Metal Container with
Handles and Lid



Wheeled Plastic Container
with Handles and Lid

AUGUST 2020

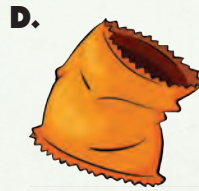
| Sunday | Monday | Tuesday | Wednesday | Thursday | Friday | Saturday |
|---|---|-----------------------------------|-----------------------------------|-----------------------------------|-----------------------------------|--|
| ACCEPTED METHODS OF TAX PAYMENT <ul style="list-style-type: none"> • ONLINE at our website: www.laceytownship.org* • Our TOLL FREE TELEPHONE NUMBER: 1-866-989-9511* • ACH: Automatic Check Withdrawal (after a short form is filled out at our office) • IN PERSON at the Tax Office Window: With Cash, Check, Money Order or Credit Card* (MasterCard, Visa, Discover or American Express accepted) <small>*A Convenience Fee of 2.69% will be charged for payments made ONLINE, by TELEPHONE, or with Credit Card IN PERSON at the Tax Window Office.</small> | | | | | | 1 |
| 2 | 3 Zone 3 Recycling Collection 3RD QUARTER REAL ESTATE TAX DUE | 4 Zone 4 Recycling Collection | 5 Zone 5 Recycling Collection | 6 Zone 2 Recycling Collection | 7 Zone 1 Recycling Collection | 8 |
| 9 | 10 Zone 3 Recycling Collection GRACE PERIOD ENDS LAST DAY to pay Real Estate Tax without interest | 11 Zone 4 Recycling Collection | 12 Zone 5 Recycling Collection | 13 Zone 2 Recycling Collection | 14 Zone 1 Recycling Collection | 15 |
| 16 | 17 Zone 3 Recycling Collection | 18 Zone 4 Recycling Collection | 19 Zone 5 Recycling Collection | 20 Zone 2 Recycling Collection | 21 Zone 1 Recycling Collection | 22 LACEY MUNICIPAL ALLIANCE 5K & 1 MILE FUN RUN |
| 23 | 24 Zone 3 Recycling Collection | 25 Zone 4 Recycling Collection | 26 Zone 5 Recycling Collection | 27 Zone 2 Recycling Collection | 28 Zone 1 Recycling Collection | 29 |
| 30 | 31 Zone 3 Recycling Collection | | | | | |

CALLING ALL GREEN KIDS!

TRASH • COMPOST • RECYCLING



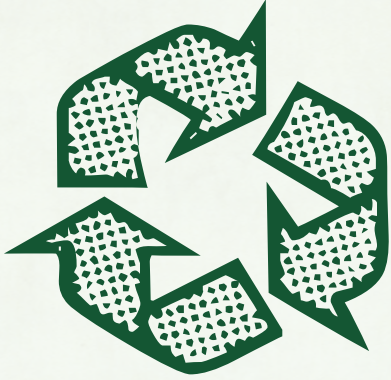
*Do you know what trash goes into which bin?
Draw a line from each piece of garbage to the correct can
they should be put in. Is it Trash? Compost? or Recycling?*



Answer: Trash - D Recycling - B, C, E, F, G Compost - A, H

SEPTEMBER 2020

| Sunday | Monday | Tuesday | Wednesday | Thursday | Friday | Saturday |
|--------------------------------------|--|--|-----------------------------------|-----------------------------------|--|--|
| | | 1 Zone 4 Recycling Collection | 2 Zone 5 Recycling Collection | 3 Zone 2 Recycling Collection | 4 Zone 1 Recycling Collection | 5 |
| 6 | 7 Zone 3 Recycling Collection MUNICIPAL OFFICES & RECYCLING CENTER CLOSED NO TRASH COLLECTION Labor Day | 8 Zone 4 Recycling Collection | 9 Zone 5 Recycling Collection | 10 Zone 2 Recycling Collection | 11 Zone 1 Recycling Collection  Patriot Day | 12 |
| 13 National Grandparent's Day | 14 Zone 3 Recycling Collection | 15 Zone 4 Recycling Collection | 16 Zone 5 Recycling Collection | 17 Zone 2 Recycling Collection | 18 Zone 1 Recycling Collection Rosh Hashanah Starts | 19 Rosh Hashanah |
| 20 Rosh Hashanah Ends | 21 Zone 3 Recycling Collection | 22 Zone 4 Recycling Collection First Day of Autumn | 23 Zone 5 Recycling Collection | 24 Zone 2 Recycling Collection | 25 Zone 1 Recycling Collection | 26 LACEY DAY FUN FOR ALL! 12 Noon - Gille Park |
| 27 Yom Kippur | 28 Zone 3 Recycling Collection | 29 Zone 4 Recycling Collection | 30 Zone 5 Recycling Collection | | | |



STOP. THINK. SORT.

32 GALLON CONTAINER STYLES



32 gallon cans = Successful Collection!

OCTOBER 2020

| Sunday | Monday | Tuesday | Wednesday | Thursday | Friday | Saturday |
|--------|---|--|-----------------------------------|-----------------------------------|--|--|
| | | | | 1 Zone 2 Recycling Collection | 2 Zone 1 Recycling Collection | 3 |
| 4 | 5 Zone 3 Recycling Collection | 6 Zone 4 Recycling Collection | 7 Zone 5 Recycling Collection | 8 Zone 2 Recycling Collection | 9 Zone 1 Recycling Collection | 10 |
| 11 | 12 Zone 3 Recycling Collection MUNICIPAL OFFICES & RECYCLING CENTER CLOSED Columbus Day | 13 Zone 4 Recycling Collection LAST DAY to Register to Vote for General Election | 14 Zone 5 Recycling Collection | 15 Zone 2 Recycling Collection | 16 Zone 1 Recycling Collection Boss's Day | 17 LACEY MUNICIPAL ALLIANCE HALLOWEEN COSTUME PARADE MIDDLE SCHOOL |
| 18 | 19 Zone 3 Recycling Collection | 20 Zone 4 Recycling Collection | 21 Zone 5 Recycling Collection | 22 Zone 2 Recycling Collection | 23 Zone 1 Recycling Collection TRAIL OR TREAT GILLE PARK - 5:30PM | 24 |
| 25 | 26 Zone 3 Recycling Collection | 27 Zone 4 Recycling Collection COUNTY DEADLINE for Receipt of Absentee Ballot Applications | 28 Zone 5 Recycling Collection | 29 Zone 2 Recycling Collection | 30 Zone 1 Recycling Collection | 31  Halloween |

FALL LEAF COLLECTION AT CURBSIDE - 3 CYCLES

The 1st Cycle Begins Monday, November 9th

The 2nd Cycle begins Monday, November 23rd

The 3rd & Final Cycle begins Monday, December 7th

THE RULES:

- ⇒ Place your leaves at curbside prior to the FIRST DAY OF EACH CYCLE
- ⇒ Leaves must be bagged in biodegradable paper bags, plastic bags, or placed in containers no larger than 32 gallons
- ⇒ **NO** tree branches, acorns or other debris – LEAVES ONLY
- ⇒ If we come to your street and your leaves were not out on the first collection cycle, we will not be back until the Next Cycle begins
- ⇒ It takes the Public Works Department about 2 weeks to complete each cycle

After the 3rd Collection, Residents are required to bring their leaves into the Recycling Center during normal operating hours.

LEAVES are Mandated Recyclable in the State of NJ, Ocean County and Lacey Township – They are **PROHIBITED** from being **LANDFILLED**

RECYCLING CENTER RULES FOR RESIDENTS:

LEAVES: If you are bringing leaves into the Recycling Center in plastic bags you must empty the bags in the leaf pile and take the empty bag(s) with you for disposal at home. If you are bringing leaves in biodegradable PAPER bags, leave the bag(s) with the leaves in the leaf pile.

BRUSH: We accept branches from tree trimming and shrubs. Dispose of these items in the Brush pile.

Leaves brought in at this time will be composted and brush will be ground down to mulch and ready for you to pick up in the Spring, just in time for you to get your garden started!



RECYCLING CENTER RULES FOR LANDSCAPERS AND CONTRACTORS: LEAVES ONLY

MONDAY THRU FRIDAY: LANDSCAPERS AND CONTRACTORS MUST SIGN IN AT THE PUBLIC WORKS OFFICE

SATURDAY AND SUNDAY: LANDSCAPERS AND CONTRACTORS MUST SIGN IN WITH THE RECYCLING YARD ATTENDANT

WE DO NOT ACCEPT GARBAGE, GRASS, TREES, TREE STUMPS, GRAVEL, DIRT, WOOD CHIPS OR ANY INVASIVE SHRUBS OR VINES SUCH AS BAMBOO OR POISON IVY IN THE RECYCLING CENTER AT ANY TIME FROM ANYONE. IT IS ILLEGAL DUMPING & SUBJECT TO VIOLATION AND PENALTY.

NOVEMBER 2020

| Sunday | Monday | Tuesday | Wednesday | Thursday | Friday | Saturday |
|--|---|--|--|--|-----------------------------|--|
| 1 | 2 | 3 | 4 | 5 | 6 | 7 |
| Daylight Savings End Set Clocks Back 1 Hour | Zone 3 Recycling Collection | Zone 4 Recycling Collection | Zone 5 Recycling Collection | Zone 2 Recycling Collection | Zone 1 Recycling Collection | |
| | 4TH QUARTER REAL ESTATE TAX DUE | GENERAL ELECTION Polls Open 6AM - 8PM MUNICIPAL OFFICES & RECYCLING CENTER CLOSED | | | | |
| 8 | 9 | 10 | 11 | 12 | 13 | 14 |
| | Zone 3 Recycling Collection | Zone 4 Recycling Collection | Zone 5 Recycling Collection | Zone 2 Recycling Collection | Zone 1 Recycling Collection | |
| |  CURBSIDE LEAF COLLECTION 1st Cycle Begins | GRACE PERIOD ENDS LAST DAY to pay Real Estate Tax without interest | MUNICIPAL OFFICES & RECYCLING CENTER CLOSED VETERAN'S DAY SERVICE 11AM - Bicentennial Park Veteran's Day | | | |
| 15 | 16 | 17 | 18 | 19 | 20 | 21 |
| America's Recycles Day | Zone 3 Recycling Collection | Zone 4 Recycling Collection | Zone 5 Recycling Collection | Zone 2 Recycling Collection | Zone 1 Recycling Collection | |
| | | | | | | |
| 22 | 23 | 24 | 25 | 26 | 27 | 28 |
| | Zone 3 Recycling Collection | Zone 4 Recycling Collection | Zone 5 Recycling Collection | MUNICIPAL OFFICES & RECYCLING CENTER CLOSED NO TRASH COLLECTION NO RECYCLING COLLECTION Thanksgiving | Zone 1 Recycling Collection | |
| |  CURBSIDE LEAF COLLECTION 2nd Cycle Begins | | | | Zone 2 Recycling Collection | MUNICIPAL OFFICES & RECYCLING CENTER CLOSED |
| 29 | 30 | ACCEPTED METHODS OF TAX PAYMENT | | | | |
| | Zone 3 Recycling Collection | <ul style="list-style-type: none"> • ONLINE at our website: www.laceytownship.org* • Our TOLL FREE TELEPHONE NUMBER: 1-866-989-9511* • ACH: Automatic Check Withdrawal (after a short form is filled out at our office) • IN PERSON at the Tax Office Window: With Cash, Check, Money Order or Credit Card* (MasterCard, Visa, Discover or American Express accepted) | | | | |
| | | | | | | <p>All 2020 and prior year Municipal charges must be paid by November 20th to avoid additional costs of Tax Sale. Tax Sale is tentatively set for January 2021.</p> |

*A Convenience Fee of 2.69% will be charged for payments made ONLINE, by TELEPHONE, or with Credit Card IN PERSON at the Tax Window Office.



LET'S RECYCLE RIGHT FOR THE HOLIDAYS AND ALL THROUGH THE YEAR!



These Holiday Recycling Tips will keep you on the Nice List:

- ❖ Wrap your Holiday Gifts in Plain Wrapping Paper, it's completely Recyclable!
- ❖ Don't forget those Holiday Cards, Plain Cards are also completely Recyclable!
- ❖ Flatten out those Corrugated Cardboard Boxes, they go right into your Recycling bin!
- ❖ Donate your old toys, those you've outgrown are probably in great condition, someone else would be happy to receive them!
- ❖ Received a new coat, sweater, shoes? Donate still useable items to a Charity or drop them off in our Recycling Center's Used Clothing Bins.
- ❖ Bet you received new gadgets this year! Recycle your old electronic gadgets at the Recycling Center.
- ❖ Having a Holiday Party – Make it easy for your guests to recycle their glass bottles and aluminum cans. Put the Recycling Can right next to your Trash can.
- ❖ Don't forget your Holiday Tree – Live Christmas Trees are completely Recyclable, without the stand of course!



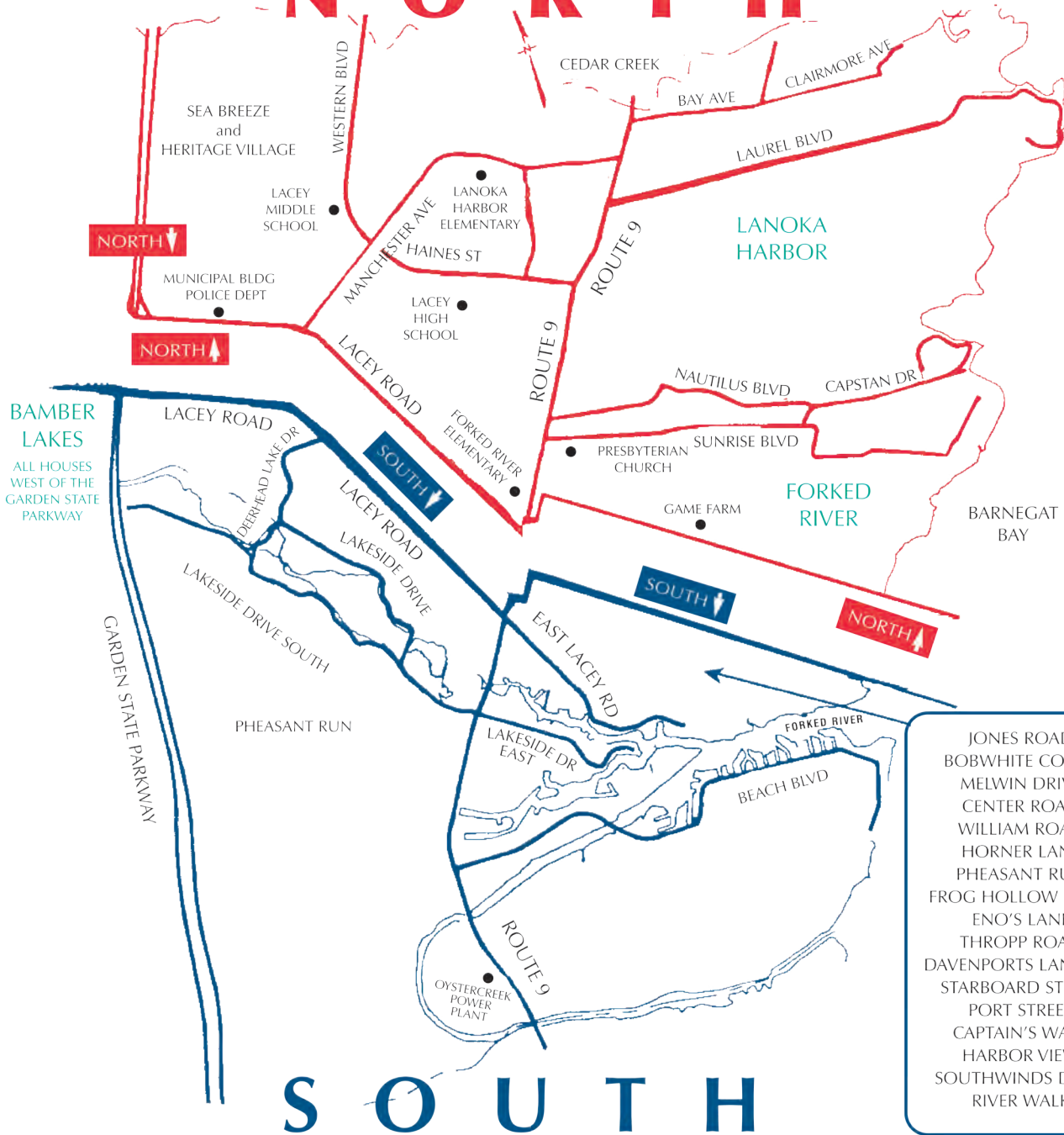
These Items are on the Naughty List and they belong in Your Trash:

- ❖ Holiday Lights and Tinsel
- ❖ Metallic and Glitter Wrapping Paper and Cards
- ❖ Holiday Bows and Ribbons
- ❖ Styrofoam, plastic bags, cups, plates and utensils

DECEMBER 2020

| Sunday | Monday | Tuesday | Wednesday | Thursday | Friday | Saturday |
|---|---|-----------------------------------|-----------------------------------|--|--|---|
| | | 1 Zone 4 Recycling Collection | 2 Zone 5 Recycling Collection | 3 Zone 2 Recycling Collection | 4 Zone 1 Recycling Collection | 5 |
| 6 BREAKFAST WITH SANTA Lanoka Harbor Fire House begins at 7AM 35TH ANNUAL CHRISTMAS PARADE Sponsored by the Lacey Elks BPOE #2518 | 7 Zone 3 Recycling Collection  CURBSIDE LEAF COLLECTION 3rd & Final Cycle Begins Pearl Harbor Remembrance Day | 8 Zone 4 Recycling Collection | 9 Zone 5 Recycling Collection | 10 Zone 2 Recycling Collection Hanukkah Begins | 11 Zone 1 Recycling Collection | 12 |
| 13 | 14 Zone 3 Recycling Collection | 15 Zone 4 Recycling Collection | 16 Zone 5 Recycling Collection | 17 Zone 2 Recycling Collection | 18 Zone 1 Recycling Collection Hanukkah Ends | 19 |
| 20 | 21 Zone 3 Recycling Collection First Day of Winter | 22 Zone 4 Recycling Collection | 23 Zone 5 Recycling Collection | 24 Zone 2 Recycling Collection Zone 1 Recycling Collection MUNICIPAL OFFICES CLOSE AT NOON RECYCLING CENTER OPEN 7AM - 11:00AM Christmas Eve | 25 MUNICIPAL OFFICES & RECYCLING CENTER CLOSED NO TRASH COLLECTION NO RECYCLING COLLECTION Christmas | 26 Kwanzaa Begins |
| 27 | 28 Zone 3 Recycling Collection | 29 Zone 4 Recycling Collection | 30 Zone 5 Recycling Collection | 31 Zone 2 Recycling Collection Zone 1 Recycling Collection New Year's Eve | 1 JANUARY 2021 MUNICIPAL OFFICES & RECYCLING CENTER CLOSED NO TRASH COLLECTION NO RECYCLING COLLECTION New Year's Day | 2  CHRISTMAS TREE COLLECTION begins Monday, January 4th, 2021. Place your Christmas Tree at curbside on your regular recycling day. |

NORTH



SOUTH

LACEY TOWNSHIP TRASH PICKUP SCHEDULE

• HOUSEHOLD GARBAGE ONLY

THE **NORTH** HALF OF TOWN WILL BE PICKED UP ON TUESDAY & FRIDAY

THE **SOUTH** HALF OF TOWN WILL BE PICKED UP ON MONDAY & THURSDAY

- JONES ROAD
- BOBWHITE COURT
- MELWIN DRIVE
- CENTER ROAD
- WILLIAM ROAD
- HORNER LANE
- PHEASANT RUN
- FROG HOLLOW ROAD
- ENO'S LANE
- THROPP ROAD
- DAVENPORTS LANDING
- STARBOARD STREET
- PORT STREET
- CAPTAIN'S WALK
- HARBOR VIEW
- SOUTHWINDS DRIVE
- RIVER WALK

SOLID WASTE COLLECTION at Curbside

Provided by Meadowbrook Industries

SOLID WASTE RULES & REGULATIONS:

- **Place solid waste containers at curbside either the night before collection or by 6:00 am the day of collection**
- **Remove your containers within 24 hours after collection**
- **All household garbage, especially food waste, must be in leak-proof 32 gallon containers with lids and serviceable handles, and together with its contents must not exceed 50 lbs. when full.**
- **Garbage set out in Corrugated Cardboard will not be collected. Corrugated Cardboard is a mandatory Recyclable item.**
- **Electronics and Televisions are mandated Recyclables, please bring them into the Recycling Center**
- **Refer to the pick-up schedule above for your collection days.**

Missed Garbage Collection must be reported the same day or at the very latest by 8:00am the following morning for corrective action. The contractor is not required to come back and pickup any collection that is set out late or not reported by the specified time. The contractor is not responsible for picking up solid waste that has blown over and spilled out on the ground, or placed out in plastic bags and torn open by animals.

Call Meadowbrook or the Public Works Dept. to report a missed collection. If you are calling after hours, please leave a message at Public Works.

SOLID WASTE SERVICE INCLUDES THE FOLLOWING:

- **Household garbage, food waste, ashes, non-recyclable plastic or paper, grass clippings.**
 - Hedge clippings, small brush, tree branches are recyclable and can be brought into the Recycling Center. If you cannot bring them in please tie and bundle no more than 4' in length weighing no more than 50 lbs. per bundle or place in your container for trash collection.
- **Furniture and Bedding**
 - Residents only, does not apply to businesses, 2 furniture pieces on your 2nd collection day; mattresses/box springs. Do not set out any sofas, chairs or mattresses if there is a chance of rain unless you cover it in plastic.
- **Carpet**
 - Approximately 1 room on your 2nd collection day. Carpet must be tied and bundled no more than 4' in length weighing no more than 50 lbs per bundle, cover in plastic if it is raining.
- **Lumber**
 - Scrap lumber pieces can be tied and bundled no more than 4' in length weighing no more than 50 lbs per bundle, or place in garbage container for collection.
- **Wallboard/Plaster Board**
 - Only 3 cans or bundles per month, weighing no more than 50 lbs. per can or bundle.
- **Sliding Glass Doors and Tempered Glass**
 - Tape up the glass and wrap the entire surface in a heavy duty tarp or blanket, label it as glass. Call the Public Works Department if you have questions prior to setting these items out for garbage collection.
- **Appliances and Metal Items BY APPOINTMENT ONLY**
You must call the Public Works Department at (609) 693-1100 x2301 or Meadowbrook Industries at (609) 971-7979 to schedule a pickup.

The following items **WILL NOT BE COLLECTED** at all, it is up to Residents to properly dispose of these items, call the Public Works Department for information prior to setting them out at curbside.

- House clean-outs
- Building and construction materials, fixtures, windows, etc, resulting from major alterations and renovations to properties by owners or contractor's, especially those that required a Building or Demolition Permit
- Concrete, brick, asbestos
- Tires and auto batteries
- Paint, motor oil or antifreeze
- Propane tanks
- Trees, earth, root matter, stones and leaves
- Concrete and asphalt
- Household Hazardous Waste including pool chemicals and fertilizers
- Mandated Recyclables – please refer to Curbside Recycling Collection and/or Recycling Center information
- Televisions and Computer Equipment
- Wood Pallets

HELPFUL HINTS:

- Are you moving into or out of town? Call Public Works at (609) 693-1100 x2301 with questions relating to the disposal of out-of-the-ordinary items. Don't assume that everything you throw out will be collected. Call us first!
- If you are emptying the contents of a house, you must get a dumpster. There are several reputable haulers, call around to get the best price. Expect to pay for the rental of the dumpster and the disposal fee at the landfill. Trash just piled at the curb will surely generate a visit from our Code Enforcement Officer.
- Solid Waste along with Asbestos, Construction Debris and Wood can be disposed of at the Ocean County Landfill. There is a charge for disposal, please call 732-323-8528 for information. Asbestos must be packaged properly and can only be disposed of at the Landfill, you must call for instructions and packaging material.



RECYCLING COLLECTION AT CURBSIDE SINGLE STREAM RECYCLING



Meadowbrook Industries is your Recycling & Solid Waste Contractor 609-971-7979 • Lacey Township Department of Public Works 609-693-1100 x2301

The Rules for Collection...

- ⇒ All Recycling must be loose in cans.
- ⇒ **No Bundles and No Plastic Bags.**
- ⇒ The can size: No larger than 32 gallons.
- ⇒ Together with its contents must weigh less than 50 lbs.
- ⇒ Cans should have serviceable handles and lids.
- ⇒ Place cans at curbside for collection either the night before or by 6:00 am the day of collection
- ⇒ The Contractor is not responsible for picking up Recycling that has blown over and spilled on the ground.
- ⇒ The Contractor is not required to come back for late set outs.
- ⇒ Please call the Contractor immediately if Recycling was not collected.
- ⇒ **Recycling will not be collected if it contains plastic bags or if it is put out in plastic bags.**
- ⇒ **Recycling will not be collected if it contains garbage or any other Materials that are not Recyclable in our Single Stream Recycling Program.**

QUESTIONS? Please call Lacey Public Works 609-693-1100 Ext. 2301

OCEAN COUNTY SINGLE STREAM RECYCLING LACEY TOWNSHIP



NO SHREDDED PAPER • PLASTIC BAGS • YOGURT or FOOD CONTAINERS
STYROFOAM • PHONE BOOKS (RECYCLE SEPARATELY) • CHIPBOARD
(TISSUE or FOOD BOXES) • PAPER TOWELS or TOILET PAPER TUBES

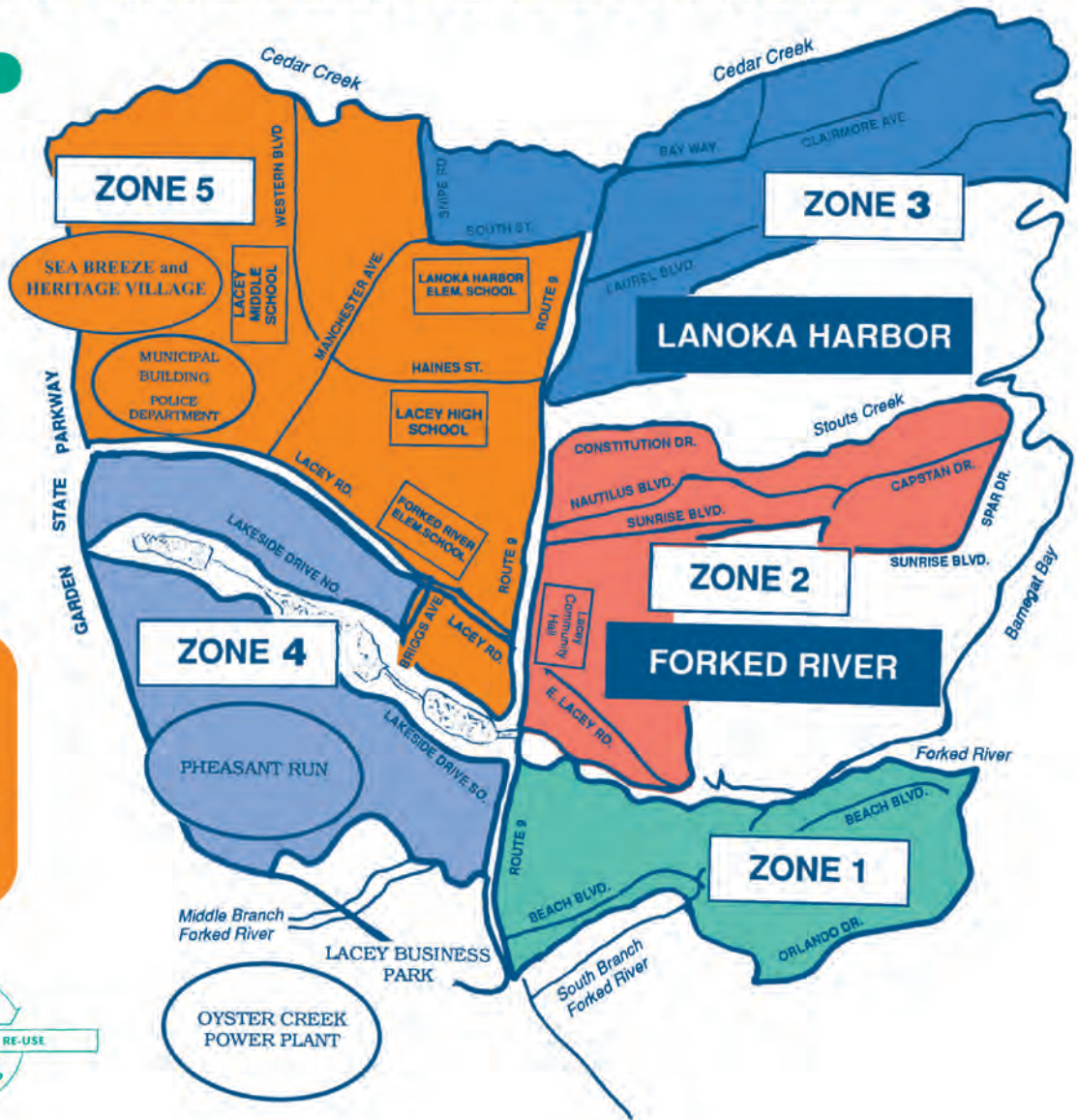
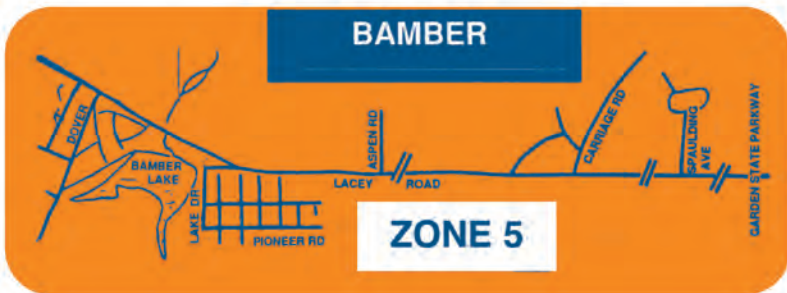
LACEY TOWNSHIP RECYCLING ZONE MAP

ZONE PICKUP SCHEDULE: RECYCLING DAY

- ZONE 1 FRIDAY
- ZONE 2 THURSDAY
- ZONE 3 MONDAY
- ZONE 4 TUESDAY
- ZONE 5 WEDNESDAY

RECYCLING PICKUP STARTS AT 6:00 AM

PLEASE PUT RECYCLABLES OUT THE NIGHT BEFORE TO AVOID MISSING YOUR PICKUP



RECYCLING CENTER

The Lacey Township Recycling Center is located on Municipal Lane. It is open Monday through Friday 7:00 am to 3:15 pm, and on Saturday and Sunday, 8:00 am to 3:45 pm. The Recycling Center is closed on every holiday that the Municipal Offices are closed. In intermittent weather, please contact the Public Works Office 609-693-1100 x 2301 or visit the Township's website, www.laceytownship.org for updated information and weather-related closings.

Residents may bring the following recyclables into the Recycling Center throughout the Year:

- Electronics, TV's & Computer Equipment, they will be recycled properly in accordance with State Law.
- Paint: Latex, oil based and boat paint only. Cans can be full, partially full or empty, 1-5 gallon paint cans. (Residents only, No Contractors).
- Used Clothing: Place in the Used Clothing Bins provided.
- Car & Boat Batteries (Accepted from Residents only, No Businesses).
- Automobile Tires: Fee applies: \$2 per tire. No more than 4 Passenger and/or Light Truck Tires only. No Rims. Accepted from Residents only, No Businesses. **We do not accept and you are not permitted to drop off any oversized, machine, or heavy truck tires.**
- Used Motor Oil and Antifreeze: (Accepted from Residents only, No Businesses). Oil and/or Antifreeze must be in a disposable 1-gallon container. Please leave containers with the Attendant on duty or on the platform in front of the oil or antifreeze tanks. There is a maximum of five (5) one (1) gallon containers per resident.
- Shrink Wrap: Accepted from Residents and Businesses.
- Single Stream Recyclables.
- Telephone Books: Deposit in the container marked "Telephone Books".
- Leaves, if your leaves are in biodegradable paper bags, the entire bag can be left in the leaf pile. If they are in plastic bags, please empty the bags and take them home with you for disposal in your trash.
- Landscapers may dump leaves at the Recycling Center but must first sign in at the Public Works Office during the week or on the weekend with the Recycling Yard Attendant on duty.
- Brush is accepted from Residents only. We accept small shrubs, Christmas trees and brush from tree trimming only. Brush can be no larger than 3" in diameter. **We do not accept any trees, tree stumps, grass, wood chips, mulch, invasive plants or shrubs such as bamboo and/or poison ivy or any brush from land clearing from anyone.**

It is a Violation of the Law for any person to drop off or leave recyclable materials at the Recycling Center at any time other than normal hours of operation or for any person to leave material, except designated recyclable materials, at the Recycling Center at any time. Violators will be Prosecuted!



We Do Not Accept any of the following Materials from anyone at any time:

- Household Garbage including food waste
- Building and Construction Materials, Fixtures, Appliances, etc.
- Propane Tanks
- Fluorescent bulbs
- Used Gasoline or Diesel Fuel
- Trees, earth, root matter, stones
- Concrete and Asphalt
- Plastic Bags or any Recyclables in Plastic Bags
- Anything tied or bundled with string
- Wax coated milk or juice cartons
- Ceramics, flower pots, window or automobile glass
- Large plastic tubs or buckets
- Scrap Metal
- Plastic caps or lids
- Cereal boxes or soiled pizza boxes
- Liquids
- Styrofoam
- Hazardous Wastes such as pool chemicals or bio-hazardous waste
- Paint Varnishes, stains, polyurethane or wood preservatives
- Wood or Plastic Wood

BEYOND THE CURB

Listed below are some other Recycling/Disposal Facilities available to Lacey Township Residents. These markets are all within the Ocean County area. They may or may not charge a disposal fee. We suggest that you call first for information.

ASBESTOS, CONSTRUCTION DEBRIS, WOOD, ETC.

Ocean County Landfill (732) 323-8528
2498 Route 70, Manchester Twp., NJ 08759

Residents MUST CALL the Landfill for fees and to obtain the proper packaging instructions for Asbestos disposal.

AUTO BATTERIES, AUTOS AND TRUCKS, ALL METALS

Sonny's Recycling (609) 971-7788
Waretown

Eastern Metal Recycling (848) 220-2892
23 Double Trouble Road, Bayville

Brick Recycling Company (732) 477-0880
2480 Old Hooper Ave., Brick.

CONCRETE, ASPHALT

Brick-Wall Corp. (609) 693-6300
Lacey Road, Forked River

MEDICATION DISPOSAL

Do **NOT** dispose of prescriptions or over the counter medicine down the toilet. Please take it to the Lacey Township Police Department for disposal.

CONCRETE, MASONRY PRODUCTS, CEMENT BLOCKS, BRICKS, ASPHALT, TREES, STUMPS, BRUSH, ASPHALT-BASED ROOFING MATERIAL

Ocean County Remanufacturing Center Inc.
(732) 244-1716
1497 Lakewood Road (Rt. 9), Toms River

EYEGLASSES

The Lions Club collects eyeglasses for distribution to the needy. Look for their bins at the OceanFirst Bank, the Optical Shop, and various other locations throughout town.

PACKAGING PEANUTS

The UPS Store, Lacey Mall

FLUORESCENT LIGHT BULBS

Home Depot

SYRINGE DISPOSAL

Southern Ocean Medical Center Family Resource Center (609) 978-3559

Community Medical Center (732) 557-8005
(Housekeeping)

This is a free, safe disposal program endorsed by the New Jersey Department of Environmental Protection.

OCEAN COUNTY RECYCLING FACILITIES:

Open Monday - Saturday ~ 7:30am - 3:00pm

Northern Center (732) 367-0802

601 New Hampshire Ave., Lakewood

Southern Center (609) 978-0913

Recovery Rd. (379 Haywood Rd.), Stafford Township, Manahawkin

- **Computer Monitors, CPU's, Laptops, TV'S, Laser/Inkjet Cartridges**
- **Cell Phones**
- **Cooking Oil & Grease**
- **Mixed Rigid Plastics (as described below)**
- **Paperback & Hardcover Books**
- **Auto, Boat, Button & Rechargeable Batteries**
- **Used Motor Oil, Oil Filters & Antifreeze**
- **Single Stream Recyclables**
- **Leaves**
- **Brush**
- **Thermostats**
- **Telephone Books**
- **Boat Shrink Wrap**
- **Fluorscent Bulbs**

As a courtesy to the Municipalities, the Ocean County Dept. of Solid Waste Management in conjunction with the Ocean County Board of Chosen Freeholders provides two Programs that greatly benefit us, the Shredding Program and the Household Hazardous Waste Program. A schedule is published in the Spring and Fall. Call the County at 732-506-5047 or go online to their website: www.co.ocean.nj.us/recycle for further information.

Recycle Mixed Rigid Plastics at the Ocean County Recycling Facilities in Lakewood or Manahawkin:

- **Plastic Buckets with metal handles**
- **Plastic lawn furniture**
- **Plastic toys & playhouses (No Metal)**
- **Empty garbage cans (any size)**
- **Plastic Milk/soda crates**
- **Plastic landscape & microwave trays**
- **Plastic Pallets**
- **(wheels and axles removed)**
- **Plastic laundry baskets**
- **Plastic totes - any size (No metal)**
- **Automotive Bed Liners (Plastic Only)**

Want to know What Goes Where and When? We have a new downloadable app and its Free!

Get the Free Recycle Coach App

Get the free app for complete trash & recycling information in Lacey at your fingertips!



AVAILABLE ON THE
App Store

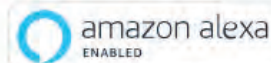


ANDROID APP ON
Google Play



Okay Google, ask **Recycle Coach** if I
can recycle this chip bag?

[Click Here to Learn More](#)



Recycle Coach...download our App today!

Solutions to Stormwater Pollution

Actions You Can Take to Protect and Restore Barnegat Bay

Why does Barnegat Bay need our help?

Long appreciated for its great aesthetic, economic and recreational value, an array of human impacts now threaten the health of Barnegat Bay.

Pollution on streets, parking lots and lawns is washed by rain and snow melt into ditches, storm drains, streams, rivers and ultimately, Barnegat Bay.

This stormwater pollution is one of Barnegat Bay's greatest threats to clean water and the rivers and creeks that drain into it. Fertilizers, pesticides, motor oil, animal waste, detergents, grass clippings, yard waste and litter are all examples of stormwater pollution.

Limit your use of fertilizers and pesticides

- Do a soil test to see if you need to fertilize.
- Use a drop spreader to apply fertilizer.
- Sweep up fertilizer from pavement and other hard surfaces after applying.
- Do not apply fertilizers if heavy rain is predicted.
- Follow the instructions on the bag label for correct application procedures.
- Try alternatives to pesticides, such as plants that repel insects.
- Properly store fertilizers and pesticide.
- Landscape your property using native vegetation and plants.



To learn more about the proper use of fertilizer, go to www.nj.gov/dep/healthylawnshealthywater.

As a resident, business, or visitor of Barnegat Bay, there are everyday actions you can take to help reduce stormwater pollution.



Clean up after your pet

- Use newspaper, bags or pooper-scoopers to pick up pet wastes.
- Dispose of pet waste in the trash or un-wrapped in a toilet.
- Never discard pet waste in a storm drain.

Don't feed wildlife

- Do not feed ducks, geese, or other forms of wildlife in public areas.

Don't litter

- Place litter in trash receptacles and keep it out of storm drains.
- Reduce, re-use and recycle.
- Participate in community cleanups.

Solutions to Stormwater Pollution

Dispose of yard waste properly

- Keep leaves and grass out of storm drains.
- Use leaves and grass clippings for compost.
- Use a mulching mower that recycles grass clippings into the lawn.

Be a green boater

- Obey no wake zones and other navigational aids.
- Use pump-out stations and vessels, and don't discharge raw sewage into open waters.
- Use non-toxic, biodegradable materials when cleaning, repairing and maintaining your boat.
- Collect paint chips, dust and residue and dispose of it in the trash.



Properly use and dispose of hazardous products

- Do not pour household or commercial cleaning products, including lawn and garden care products, motor oil, antifreeze and paints, down storm drains or into open water.
- Properly label and store hazardous products.
- Use natural or less toxic alternatives when possible.
- Recycle used motor oil.
- Contact your municipality, county or facility management office for the locations of hazardous-waste disposal facilities.

Take action and be part of the solution

Stormwater pollution is one of Barnegat Bay's greatest threats. By sharing the responsibility and making these small, easy changes in our daily lives, we can keep common pollutants out of stormwater. It all adds up to cleaner water in the Bay and saves the high cost of cleaning it up once it becomes dirty.

For More Information

New Jersey Department of Environmental Protection

Bureau of Nonpoint Source Pollution Control
(609) 633-7021

Office of Communications
(609) 984-1795



To learn more about the Barnegat Bay Ten Point Action Plan, go to www.barnegatbay.nj.gov.



To learn more about water quality and stormwater pollution, go to www.cleanwater.nj.org

REMINDER

Parking on the street is prohibited when snow plows are in use!

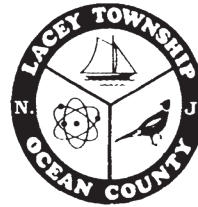
- Whenever snow has fallen and the accumulation is such that it covers the streets and highways, an emergency shall exist and no vehicle shall be parked on the streets or highways or portions thereof indicated.

- The above parking prohibitions shall remain in effect after the snow has ceased until the streets have been plowed sufficiently and to the extent that parking will not interfere with the normal flow of traffic.

- Any unoccupied vehicle parked or standing in violation shall be deemed a nuisance and a menace to the safe and proper regulation of traffic and any police officer may provide for the removal of such vehicle. The owner shall pay the reasonable costs of the removal and storage which may result from such removal before regaining possession of the vehicle.

- Driving restrictions may be imposed as warranted by the severity of the storm to ensure the safety of the general public.

*This calendar is completely recyclable.
Recycle with your single stream recycling
at the curb!*



TOWNSHIP OF LACEY
818 W. LACEY ROAD
FORKED RIVER, NJ 08731

U.S. POSTAGE
PAID
PERMIT #221
TOMS RIVER
NEW JERSEY

POSTAL PATRON LOCAL

Would you like to volunteer or become more active in the community? JOIN A CLUB OR ORGANIZATION TODAY!

- | | |
|---|--|
| <p>Fish Hawks Salt Water Anglers Club..... www.FlshHawksNJ.com</p> <p>Woman's Club of Lacey609-693-4357</p> <p>Lacey Garden Club609-971-3729</p> <p>Lacey Elks Lodge #2518.....609-693-9831</p> <p>Forked River Mountain Coalition www.frmc.org</p> <p>US Coast Guard Auxiliary609-488-5778</p> <p>Lacey Little League..... www.laceylittleleague.org</p> <p>American Legion Post 517 - Bill609-242-7056</p> <p>Marine Corps League - Bernie609-276-1775</p> <p>Rotary Club of Forked River..... www.forkedriverrotary.org</p> <p>Lacey Soccer Club www.laceysoccer.com</p> <p>Lacey Historical Society.....609-971-0467</p> <p>Knights of Columbus #6522609-971-9532</p> | <p>Disabled American Veterans609-242-1445</p> <p>Old Guard of Forked River - Dick Clark609-693-0587</p> <p>VFW Post 10118609-693-7089</p> <p>BCYAA Lacey Basketball ... laceybasketball@gmail.com</p> <p>Lacey Township Democratic Club - Tara Kownacki 858-212-4512</p> <p>Italian American Social Club - Gerry LaPenna....609-971-7258</p> <p>Lacey Roller Hockey www.laceyrollerhockey.com</p> <p>Lacey Youth Wrestling Club .. www.laceywrestling.com</p> <p>Friends of the Lacey Library www.laceyfriends.org</p> <p>Lacey Twp. Regular Republican Club732-779-3264 Jerry Conaty - jconaty@hfacpas.com</p> <p>Lacey Men's over 45 Basketball League ..609-540-0968 or 609-693-3670</p> <p>Lacey Moose Lodge #1907305 N. Main St. (Rt. 9) Forked River, NJ 08731 609-693-1243</p> |
|---|--|