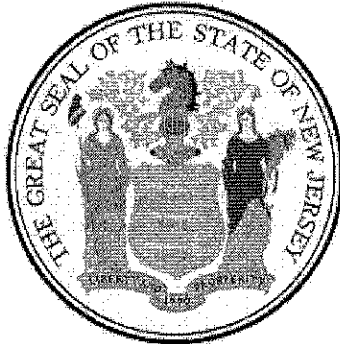
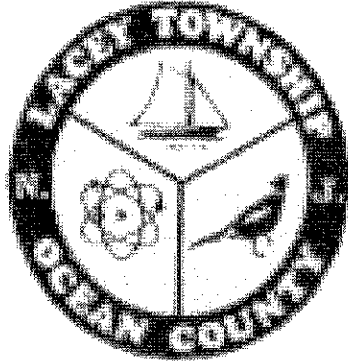


# Lacey Township 2014 Annual Tax Collector's Report



March 1, 2015

Pursuant to N.J.S.A. 54:4-91

**Gary Quinn, Mayor**  
**Mark Dykoff, Deputy Mayor**  
**David Most, Committeeman**  
**Steven Kennis, Committeeman**  
**Peter Curatolo, Committeeman**

**Veronica Laureigh, Municipal Clerk**  
**Adrian Fanning, Chief Financial Officer**  
**Veronica Laureigh, Administrator**  
**George Gilmore, Township Solicitor**  
**William E. Antonides, Jr Municipal Auditor**

*Sharon A Sulecki, CTC, Tax Collector*



*Please Note:*

*The figures in this report  
are unaudited.*

*Respectfully Submitted,*

*Sharon A Sulzcki, CTC,  
Tax Collector*

***Special Thanks to:  
Melba Mitchell  
For Designing this Report***

## TABLE OF CONTENTS

Lacey Tax Collector's Statement.....	1
2014 Tax Levy.....	2
2014 Levy Adjustments and Transfers to Lien.....	2
Gross Tax Levy History.....	3
Total Cash Received.....	4
Current Taxes Collected.....	4
Overpayments.....	4
2014 Collections and Balance with Adjustments.....	5
Tax Collections in Percentages.....	6
A 25 Year History of Percentage, Rate and Ratio.....	7
History of Tax Rates & Ratios *.....	8
Lacey Twp Tax Rate Breakdown .....	9
Ratables *.....	10
SR1A's Processed * .....	11
15 Largest Taxpayers * .....	12
Lacey Township District Summary.....	13
Ocean County Percentage of Collection for 2014.....	14
Tax Ratio History.....	15
Interest Collected from Delinquent Taxes.....	16
Miscellaneous Revenue.....	17
2014 Credit Card Transactions.....	18
2014 Tax Sale Information.....	19
Breakdown of Certificates Sold.....	20
Financial Status of Township Liens.....	21
Lacey Municipal Utilities Authority; Third Party Lien Data.....	22
Foreclosure Information.....	23
Third Party Premium Trust Accounts As of 2014.....	24
Lacey Township Tax Collectors 2014 C.E.U. Report.....	25
Tax Collectors Office Staff.....	26

\* provided by Tax Assessor's office

## 2014 Tax Levy

Levy Per Duplicate.....	\$72,902,205.14
Added Assessment.....	\$316,733.51
Gross 2014 Tax Levy.....	\$73,218,938.65
2014 Billing Adjustments Including Transfer Liens.....	\$ (46,916.41)
Grand Total 2014 Levy.....	\$73,172,022.24
Less:	
<b>Net Total collected through Tax Office.....</b>	<b>\$71,942,001.40</b>
Senior Citizen & Veteran Deduction per 2014 Duplicate.....	(\$476,081.88)
Homestead Benefit Credit.....	(\$0.00)
Total Balance Levy at year end 2014.....	\$440,119.97

**Gross Tax Levy  
History**

Year	Amount
1990	\$ 23,212,402.00
1991	\$ 20,386,393.70
1992	\$ 21,002,977.97
1993	\$ 23,029,063.16
1994	\$ 24,054,575.31
1995	\$ 24,829,971.57
1996	\$ 27,164,722.64
1997	\$ 28,013,056.52
1998	\$ 29,921,934.62
1999	\$ 32,099,690.68
2000	\$ 33,820,187.01
2001	\$ 36,485,904.64
2002	\$ 40,573,259.86
2003	\$ 44,967,097.36
2004	\$ 48,278,910.48
2005	\$ 50,891,086.93
2006	\$ 54,368,312.97
2007	\$ 58,397,001.93
2008	\$ 58,547,840.12
2009	\$ 60,696,963.44
2010	\$ 62,124,636.21
2011	\$ 63,566,165.31
2012	\$ 65,809,473.62
2013	\$ 70,552,993.90
2014	\$ 73,172,022.24

**TOTAL CASH RECEIVED**  
(Through the Tax Office)

2014.....	\$72,418,083.28
2013.....	\$71,379,897.62
2012.....	\$65,827,748.00
2011.....	\$64,066,617.98
2010.....	\$62,730,182.18
2009.....	\$62,451,171.27
2008.....	\$59,446,371.73
2007.....	\$58,904,717.20
2006.....	\$54,640,089.87
2005.....	\$51,602,882.23
2004.....	\$48,720,089.19

**CURRENT TAXES COLLECTED (NET)**

2014.....	\$71,942,001.40
2013.....	\$67,258,773.92
2012.....	\$64,153,877.07
2011.....	\$62,212,659.76
2010.....	\$60,809,330.57
2009.....	\$59,521,319.94
2008.....	\$57,291,436.16
2007.....	\$57,774,000.67
2006.....	\$53,726,207.97
2005.....	\$50,508,949.84
2004.....	\$47,801,737.17

**OVERPAYMENTS**

2014.....	\$	0.00
2013.....	\$	0.00
2012.....	\$	0.00
2011.....	\$	1,419.66
2010.....	\$	1,419.66
2009.....	\$	1,419.66
2008.....	\$	1,533.16
2007.....	\$	250.00
2006.....	\$	0.00
2005.....	\$	3,180.77
2004.....	\$	14,235.81

2014 COLLECTIONS

Prepaid 2014 Taxes Paid in 2013.....\$1,195,983.09  
2014 Taxes Collected in 2014.....\$70,746,018.31  
Subtotal.....\$71,941,956.40

2014 BALANCE

Net Adjusted 2014 Levy From Page 2...\$73,218,938.65  
Net Collected.....\$72,778,818.68  
2014 Balance as of December 31, 2014....\$440,119.97

# Township of Lacey Tax Collections in Percentages

2014.....	98.90%*
2013.....	98.29%
2012.....	98.29%
2011.....	98.72%
2010.....	98.79%
2009.....	98.54%
2008.....	98.68%
2007.....	98.93%
2006.....	99.00%
2005.....	99.22%
2004.....	98.72%
2003.....	99.07%

Lacey can be proud of its collection percentage. It has been a long-standing goal to have one of the highest percentages of collection in the County. This year we were once again among the highest in the County. It is with the cooperation of the governing body we were able to achieve our goal. Our percentage is also among one of the highest in the state!

\* Unaudited



**A TWENTY-FIVE YEAR HISTORY OF PERCENTAGE OF  
COLLECTIONS RATE AND TAX RATE FOR \$100 OF  
EVALUATION IN LACEY TOWNSHIP**

YEAR	PERCENT	TAX RATE	REAP	LOCAL PURPOSE RATE	LOCAL PURPOSE AMOUNT
1990	95.19%	3.709		0.109	\$669,313.13
1991	94.70%	1.332			\$0.00
1992	95.73%	1.366		0.038	\$589,658.39
1993	95.94%	1.539		0.108	\$1,613,634.72
1994	96.70%	1.642		0.113	\$1,650,169.45
1995	96.88%	1.674		0.112	\$1,666,937.94
1996	97.50%	1.821		0.116	\$1,719,732.06
1997	99.70%	1.856	0	0.115	\$1,731,160.75
1998	99.87%	1.949	0	0.115	\$1,749,533.43
1999	99.17%	2.075	0	0.115	\$1,780,384.72
2000	98.77%	2.140	0	0.142	\$2,221,577.80
2001	98.40%	2.274	2.266	0.142	\$2,300,474.04
2002	98.39%	2.479	0	0.174	\$2,810,868.77
2003	99.07%	2.716	0	0.194	\$3,200,730.26
2004	99.01%	2.868	0	0.203	\$3,387,886.40
2005	99.12%	2.976	0	0.233	\$3,953,556.01
2006	99.00%	3.123	0	0.265	\$4,569,686.86
2007	98.93%	3.315	0	0.229	\$5,235,269.94
2008	98.84%	3.292	0	0.348	\$6,162,707.34
2009	98.98%	1.412	0	0.166	\$7,130,627.07
2010	98.77%	1.434	0	0.183	\$7,926,317.96
2011	98.72%	1.468	0	0.207	\$8,953,889.04
2012	98.29%	1.526		0.227	\$9,767,233.13
2013	98.29%	1.647	0	0.252	\$10,797,861.40
2014	98.90%	1.720	0	0.280	\$9,960,275.90

*The Regional Efficiency Aid Program (R.E.A.P.) was created and funded by the State to encourage local governments to share services. The Lacey School System applied and was granted aid for sharing services with the Township. This resulted in a savings to the residential taxpayers of \$.008 per hundred (\$80,994.89 in taxes) on the 2001 Tax Rate.*

# *Township of Lacey*

## *Tax Assessor's Office*

### TAX RATES AND RATIOS

<u>Year</u>	<u>Rate</u>	<u>Ratio</u>	<u>Revaluation</u>	
1965	1.79	109.94	1991	1.332 89.52
1966	1.86	102.02	1992	1.366 95.99
1967	1.92	100.12	1993	1.539 99.76
1968	1.73	95.03	1994	1.642 97.49
1969	1.84	90.77	1995	1.674 95.52
1970	1.94	87.87	1996	1.821 96.53
1971	2.48	82.61	1997	1.856 95.68
1972	2.03	76.44	1998	1.949 95.17
1973	2.03	75.48	1999	2.075 95.80
<u>Revaluation</u>			2000	2.140 94.94
1974	1.20	112.62	2001	2.274 90.19
1975	1.78	91.92	2002	2.479 83.77
1976	1.76	85.51	2003	2.716 75.11
1977	1.47	81.06	2004	2.868 64.82
1978	1.51	78.01	2005	2.976 55.82
1979	1.53	72.98	2006	3.123 47.49
1980	1.57	70.13	2007	3.315 41.69
<u>Revaluation</u>			2008	3.292 40.01
1981	2.077	108.93	<u>Revaluation</u>	
1982	1.961	99.46	2009	1.412 96.75
1983	1.816	92.61	2010	1.434 100.40
1984	1.816	90.18	2011	1.468 101.77
1985	1.898	83.20	2012	1.526 105.76
1986	2.027	78.46	2013	1.647 108.02
1987	2.304	67.84	2014	1.720 108.32
1988	2.972	51.63		
1989	3.279	41.32		
1990	3.709	37.46		

# LACEY TOWNSHIP TAX RATE BREAKDOWN

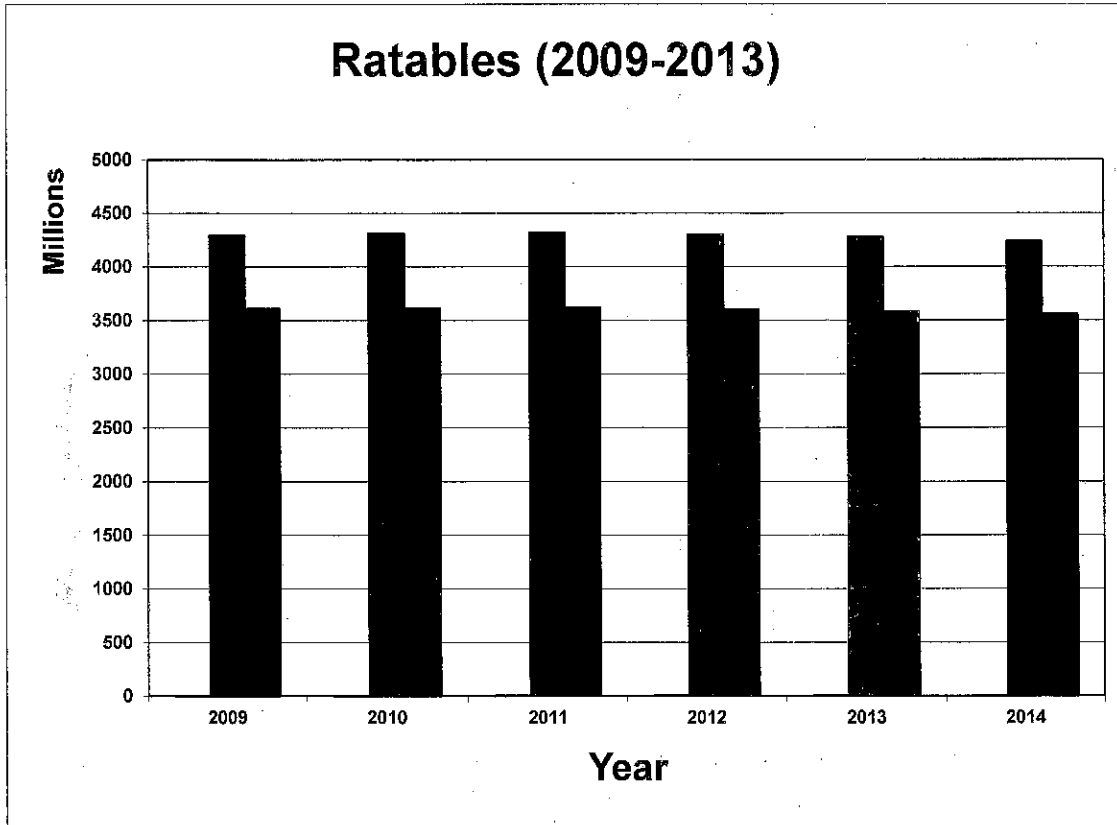
YEAR	COUNTY	LOCAL	LIBRARY	HEALTH	SCHOOL	OPEN SPACE	REAP	TOTAL
1991	0.406	0.000	0.033	0.012	0.881			1.332
1992	0.404	0.038	0.034	0.013	0.877			1.366
1993	0.417	0.108	0.037	0.012	0.965			1.539
1994	0.463	0.113	0.041	0.014	1.011			1.642
1995	0.476	0.112	0.044	0.016	1.026			1.674
1996	0.472	0.116	0.045	0.015	1.173			1.821
1997	0.484	0.115	0.047	0.016	1.194			1.856
1998	0.486	0.114	0.050	0.018	1.269	0.012		1.949
1999	0.498	0.115	0.050	0.018	1.382	0.012		2.075
2000	0.491	0.142	0.049	0.018	1.427	0.013		2.140
2001	0.528	0.144	0.052	0.020	1.516	0.014	(\$0.008)	2.274
2002	0.539	0.174	0.055	0.022	1.675	0.014		2.479
2003	0.547	0.194	0.058	0.024	1.877	0.016		2.716
2004	0.557	0.203	0.060	0.026	2.003	0.019		2.868
2005	0.576	0.233	0.061	0.026	2.059	0.021		2.976
2006	0.595	0.265	0.064	0.026	2.147	0.026		3.123
2007	0.613	0.299	0.073	0.030	2.271	0.029		3.315
2008	0.635	0.348	0.075	0.031	2.173	0.03		3.292

## REVALUATION

2009	0.264	0.166	0.031	0.013	0.926	0.012		1.412
2010	0.269	0.183	0.031	0.013	0.926	0.012		1.434
2011	0.278	0.207	0.033	0.012	0.926	0.012		1.468
2012	0.286	0.227	0.033	0.012	0.957	0.011		1.526
2013	0.303	0.252	0.035	0.013	1.033	0.011		1.647
2014	0.315	0.28	0.035	0.013	1.066	0.011		1.720

## Ratable Base Comparison (year by year)

Ratable Year	Total Ratables	Class 2 Ratables	Ratable Line Items	Avg. Value	Class 2 Line Items	Avg. Class 2 Values	Personal Property
2009	\$4,290,499,900	\$3,608,130,300	15,690	\$273,454	11,318	\$318,796	
2010	\$4,313,675,300	\$3,614,292,600	15,659	\$275,476	11,357	\$318,244	
2011	\$4,315,506,900	\$3,620,835,200	15,642	\$275,892	11,389	\$317,924	
2012	\$4,300,994,167	\$3,603,572,800	15,513	\$277,251	11,405	\$315,964	\$7,009,567
2013	\$4,272,679,351	\$3,577,551,700	15,519	\$275,319	11,442	\$312,668	\$6,114,151
2014	\$4,233,386,400	\$3,556,635,000	15,511	\$272,928	11,476	\$309,919	\$5,123,899



\*Note - 2012 assessments were corrected for correction of errors

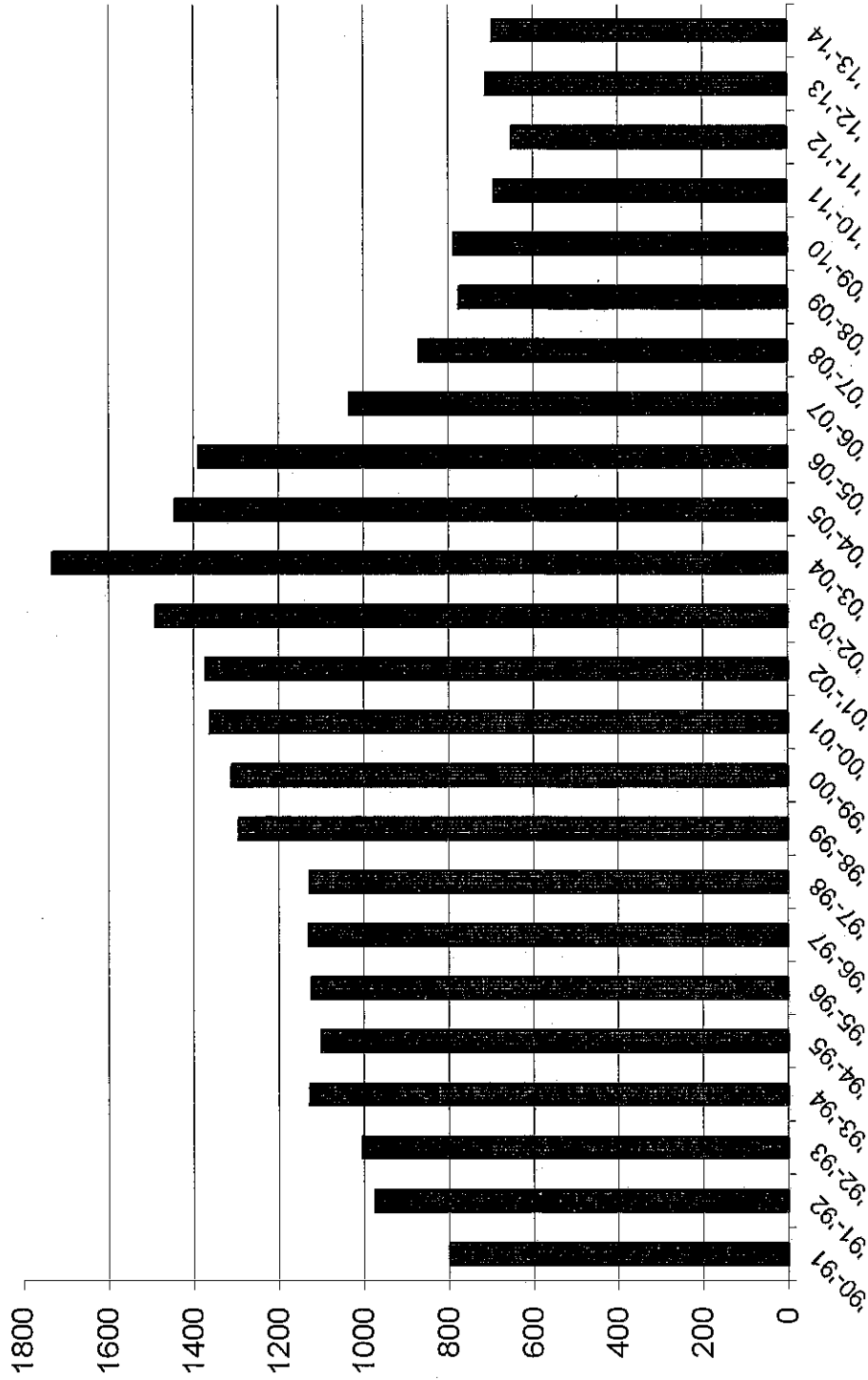
\*\*Note - Personal property has not been included prior to 2012. From 2012 forward, the amount is now included in the total ratables.

**Bradley R. Millman, CTA**  
Tax Assessor  
Township of Lacey

# SR1A's

Sampling Period	Amount
'90-'91	798
'91-'92	973
'92-'93	1003
'93-'94	1127
'94-'95	1098
'95-'96	1123
'96-'97	1130
'97-'98	1127
'98-'99	1293
'99-'00	1310
'00-'01	1361
'01-'02	1370
'02-'03	1489
'03-'04	1731
'04-'05	1444
'05-'06	1387
'06-'07	1033
'07-'08	869
'08-'09	775
'09-'10	787
'10-'11	692
'11-'12	649
'12-'13	712
'13-'14	696

# SR1A's Processed



The Sampling Period for SR1A's is from July 1 thru June 30  
 99/'00 was amended during September 2000 as the county did not send us all the recorded deeds for this sampling period

**Lacey Township's  
15 Largest Tax Payers  
As of January 1, 2015**

#	Owner	Block	Lot	Land	Bldg	Total
1	Exelon Generation Co., LLC	VARIOUS				\$114,054,400
2	J C P & L	VARIOUS				\$50,059,100
3	PR Lacey LLC	VARIOUS				\$29,860,800
4	Piedmont Associates	409	2.01	\$3,202,000	\$17,454,100	\$20,656,100
5	Wal-Mart R.E. Business Trust	629	1.01	\$4,815,000	\$12,390,400	\$17,205,400
6	Toll Land XI, LP	VARIOUS				\$15,668,500
7	Forked River Residences, LLC	VARIOUS				\$9,580,100
8	Forked River Power, LLC	VARIOUS				\$7,554,000
9	Karchik, Ronald	VARIOUS				\$7,257,800
10	Cav-Burt, LLC	VARIOUS				\$5,302,300
11	David & Dawn Giombetti	VARIOUS				\$5,220,800
12	WaWa, Inc.	VARIOUS				\$5,171,500
13	Fieldcrest, LLC	VARIOUS				\$5,019,400
14	Marina At Southwinds, LLC	VARIOUS				\$4,916,000
15	Georgetown Village, Inc.	VARIOUS				\$4,899,500

**Bradley Millman, CTA  
Deputy Tax Assessor  
Township of Lacey**

## LACEY TOWNSHIP DISTRICT SUMMARY

Lacey Township continues to grow. Our assessed value by the end of 2014 was over 4.2 billion dollars. The breakdown of properties follows:

### TAXABLE PROPERTIES

TYPE	2013	Assessed Value 2013	2014	Assessed Value 2014
Residential properties	11,442	3,577,090,600	11,477	3,556,920,000
Vacant Land	3,696	118,838,300	3,652	107,786,900
Commercial	307	337,470,300	309	336,213,100
Industrial	46	222,691,800	46	222,393,200
Farms (regular)	10	4,662,100	9	3,893,800
Farms (qualified)	15	965,800	16	996,700
Public Utility	1	6,114,151	1	5,123,899
Apartment	1	5,172,700	1	5,172,700
<b>TOTAL</b>	<b>15,518</b>	<b>4,273,005,751</b>	<b>15,511</b>	<b>4,238,500,299</b>

In addition to the taxable properties above, the Township has the following exempt properties

### EXEMPT PROPERTIES

TYPE	2013	Assessed Value 2013	2014	Assessed Value 2014
Public Property	2,419	133,643,600	2,424	133,285,400
Miscellaneous (Disabled vets etc)	286	85,389,600	289	87,824,200
Public Schools	44	99,073,300	45	99,980,300
Charitable	22	36,886,000	22	36,886,000
Cemetery	2	997,000	1	997,000
<b>TOTAL</b>	<b>2,773</b>	<b>355,989,500</b>	<b>2,781</b>	<b>358,972,900</b>

### Taxpayers Receiving Deductions per Tax Duplicate

TYPE	2013	Tax Value 2013	2014	Tax Value 2014
Senior Citizen	446	111,500	391	97,750
Disabled Persons	103	25,750	94	23,500
Veterans & Widows of Vets	1537	383,750	1422	355,000
Surviving Spouse	8	2,000	6	1,500
<b>TOTAL</b>	<b>2,094</b>	<b>523,000</b>	<b>1,913</b>	<b>477,750</b>

**Ocean County Percentage of  
Collection for 2014**

<b>County Average</b>	<b>98.14%</b>
-----------------------	---------------

<b>Municipality</b>	<b>Percentage</b>
Plumsted **	100.00%
Little Egg Harbor	99.97%
Harvey Cedars	99.54%
Barnegat Light	99.51%
Seaside Heights **	99.35%
Long Beach	99.10%
Stafford Township	99.04%
<b>Lacey Township</b>	<b>98.90%</b>
Manchester *	98.78%
Beach Haven Boro	98.70%
Waretown	98.70%
Surf City	98.67%
Pt. Pleasant Beach	98.51%
Jackson	98.45%
Island Heights	98.02%
Lavallette Boro	97.89%
Seaside Park	97.85%
Pt. Pleasant Boro	97.46%
Toms River Township	97.33%
Lakewood	97.32%
Lakehurst	97.29%
Beachwood	97.14%
Berkeley Township	96.50%
Ship Bottom	96.30%
Tuckerton	96.00%
Ocean Gate	95.43%
Eagleswood	N/A
Barnegat	N/A
Brick Township	N/A
Bay Head Boro	N/A
Pine Beach	N/A
So. Toms River	N/A
Mantoloking	N/A

\* Fiscal Year Figures are Unaudited

\*\* Accelerated Sale N/A figures not available



**Below is listed a history of Tax Ratio  
as compared with Assessed Value to  
True Value of 100% evaluation.**

<b>Year</b>	<b>Ratio</b>
1994	97.490
1995	95.520
1996	96.530
1997	95.680
1998	95.170
1999	95.800
2000	94.940
2001	90.190
2002	83.770
2003	75.110
2004	64.820
2005	55.820
2006	47.490
2007	41.690
2008	40.010
2009	96.750
2010	100.400
2011	101.770
2012	105.760
2013	108.020
<b>2014</b>	<b>108.320</b>

# INTEREST COLLECTED FROM DELINQUENT TAXES

<b>2014.....</b>	<b>\$138,696.89</b>
2013.....	\$130,840.07
2012.....	\$127,895.40
2011.....	\$ 150,714.17
2010.....	\$ 118,737.89
2009.....	\$ 122,471.66
2008.....	\$126,851.37
2007.....	\$107,091.50
2006.....	\$90,214.71
2005.....	\$ 88,045.30
2004.....	\$ 96,001.46
2003.....	\$102,209.12
2002.....	\$ 97,132.86

## MISCELLANEOUS REVENUE

Revenue	Total
Certificates of Redemption @ \$25.00	\$2,000.00
NSF Charge @\$20.00 per returned check	\$480.00
Duplicate Tax Bill	\$5.00
Year End Penalty	\$8,201.53
Copies	\$21.75
Third Party Lien	\$1,369,673.07
LMUA Trust Accounts (Including Lien Redemption)	\$478,046.82
Cost Collected Prior to Sale	\$35,787.80
Duplicate Tax Sale Certificates	\$0.00
In Lieu	\$95,850.00
Searches	\$80.00
Unallocated Receipts Refunded	\$207,959.54
Electronic File Fees	\$600.00
Twp Liens-Recording & Search Fee	\$680.00
Notary Charge	\$7.50
Maintenance Clean-Up Charge	\$4,567.70
Calculating Fees for Redemption Figures	\$1,200.00

## CREDIT CARD TRANSACTIONS

	Counter	IVR Payments	Web Payments	TOTAL
JANUARY	\$ 6,124.05	\$ 915.74	\$ 45,644.30	\$ 52,684.09
FEBRUARY	\$ 36,003.80	\$ 9,073.89	\$ 154,262.70	\$ 199,340.39
MARCH	\$ 50.46	\$ -	\$ 23,994.98	\$ 24,045.44
APRIL	\$ 5,888.78	\$ 1,621.89	\$ 51,643.51	\$ 59,154.18
MAY	\$ 22,658.38	\$ 9,247.18	\$ 143,303.04	\$ 175,208.60
JUNE	\$ 720.37	\$ -	\$ 36,390.49	\$ 37,110.86
JULY	\$ 1,325.92	\$ 2,411.58	\$ 75,128.33	\$ 78,865.83
AUGUST	\$ 27,197.21	\$ 10,751.97	\$ 166,171.85	\$ 204,121.03
SEPTEMBER	\$ -	\$ -	\$ 27,925.55	\$ 27,925.55
OCTOBER	\$ 15,530.54	\$ 2,703.01	\$ 69,310.77	\$ 87,544.32
NOVEMBER	\$ 21,379.67	\$ 10,530.57	\$ 133,080.94	\$ 164,991.18
DECEMBER	\$ -	\$ -	\$ -	\$ -
<b>TOTAL</b>	<b>\$ 136,879.18</b>	<b>\$ 47,255.83</b>	<b>\$ 926,856.46</b>	<b>\$ 1,110,991.47</b>

## NUMBER OF CREDIT CARD TRANSACTIONS

	Counter	IVR Payments	Web Payments	TOTAL
JANUARY	3	1	35	39
FEBRUARY	26	7	128	161
MARCH	2	0	17	19
APRIL	7	2	47	56
MAY	28	8	114	150
JUNE	1	0	38	39
JULY	2	2	61	65
AUGUST	27	14	132	173
SEPTEMBER	0	0	19	19
OCTOBER	11	2	58	71
NOVEMBER	21	9	94	124
DECEMBER	0	0	0	0
<b>TOTAL</b>	<b>128</b>	<b>45</b>	<b>743</b>	<b>916</b>

*IVR Payments are payments made over the phone through Point and Pay.  
 IVR payments can be made using credit cards only  
 Payments made through e-check are reflected in Web Payment figures.*

## 2014 Tax Sale Statistics Are As Follows:

First Publication (Mailed in Lieu)	December 16, 2013
Second Publication	December 26, 2013
Third Publication	January 2, 2014
Fourth Publication (Mailed in Lieu)	January 6, 2014
<b>Certificates Sold To Third Party Lienholders</b>	
Number of Certificates	304
LMUA Charges collected at sale	\$157,067.34
Taxes & Miscellaneous Charges	\$327,255.86
Interest	\$21,855.31
Cost of Sale	\$9,202.86
Total Third Party Liens	\$515,381.37
Premium collected at Tax Sale	\$570,200.00
<b>Certificates Sold To The Township Of Lacey</b>	
Number of Certificates	90
Water Charges	\$0.00
Sewer Charges	\$0.00
Taxes	\$31,707.19
Interest	\$1,743.41
Cost of Sale	\$1,690.80
Total Township Liens	\$35,141.40
<b><u>Grand Totals</u></b>	
<b>Certificates Sold</b>	<b>394</b>
<b>Amount</b>	<b>\$550,522.77</b>

## Breakdown of Certificates Sold

The statistics of the sale are as follows:

	<u>2014</u>	<u>2013</u>	<u>2012</u>	<u>2011</u>	<u>2010</u>
Actual Advertised Tax Delinquents	921	1889	1725	1425	1537
Certificates Sold to Third Party Lien Holders	308	574	362	430	264
Certificates Sold to Township	90	59	82	161	47
Total Certificates Created	398	633	444	591	311

Premium collected at the 2014 Tax Sale	\$570,200.00
--	--------------

<u>Cost of Sale Revenue Prior to Sale Pursuant to Statutes</u>	
COLLECTED AT THE TAX OFFICE	\$33,657.55
COLLECTED AT THE LMUA	\$0.00
TOTAL COLLECTED	\$33,657.55

## Financial Status of Township Liens

### Lacey Township Tax Title Liens

	<u>2014</u>	<u>2013</u>	<u>2012</u>	<u>2011</u>	<u>2010</u>	<u>2009</u>	<u>2008</u>
Certificates on hand as of 01/01/14	417	400	335	294	257	234	210
Certificates created as of 1/17/14	90	59	82	161	47	35	37
Certificates Redeemed	-34	-38	-17	-13	-10	-10	-12
Certificates Foreclosed	0	0	0	-106	0	0	0
Certificates Canceled by Resolution	0	-4	0	-1	0	-2	-1
Certificates on Hand 12/31/14	473	417	400	335	294	257	234

### Tax Title Lien Balance

<b>Balance as of</b>	<b>December 31, 2014</b>	<b>\$ 198,221.50</b>
Balance as of	December 31, 2013	\$ 179,261.61
Balance as of	December 31, 2012	\$ 136,495.90
Balance as of	December 31, 2011	\$ 87,483.77
Balance as of	December 31, 2010	\$ 32,746.08
Balance as of	December 31, 2009	\$ 19,389.19
Balance as of	December 31, 2008	\$ 15,244.45
Balance as of	December 31, 2007	\$ 10,349.62
Balance as of	December 31, 2006	\$ 9,527.53
Balance as of	December 31, 2005	\$ 4,335.28
Balance as of	December 31, 2004	\$ 5,631.67
Balance as of	December 31, 2003	\$ 6,951.55
Balance as of	December 31, 2002	\$ 24,848.90
Balance as of	December 31, 2001	\$ 20,415.38

### Amount (In Dollars) In Tax Title Liens

Balance as of 01/01/14	\$ 179,261.61
2013 Taxes Transferred to Liens at Tax Sale	\$ 16,016.70
2014 Taxes Transferred to Liens at Year End	\$ 46,916.41
Interest and Cost at Tax Sale	\$ 3,434.21
<b>Subtotal</b>	<b>\$ 245,628.93</b>
Liens Redeemed	\$ (41,711.52)
Liens cancelled	\$ -
Utility collected	\$ (5,695.91)
Taxes Cancelled Including Foreclosure	\$ -
<b>Lien Balance as of 12/31/14</b>	<b>\$ 198,221.50</b>

**LACEY MUNICIPAL UTILITIES AUTHORITY**

	<u>2014</u>	<u>2013</u>	<u>2012</u>	<u>2011</u>	<u>2010</u>
LMUA Payment Collected Prior to Tax Sale	\$268,289.83	\$752,111.06	\$271,684.45	\$109,321.01	\$58,872.32
LMUA Collected In Trust @ Tax Sale	\$157,067.34	\$413,712.11	\$314,323.77	\$282,090.55	\$166,570.68
<b>TOTAL COLLECTED ***</b>	<b>\$425,357.17</b>	<b>\$1,165,823.17</b>	<b>\$586,008.22</b>	<b>\$391,411.56</b>	<b>\$225,443.00</b>

\*\*\*Does not reflect subsequent charges collected at the tax office.  
 (Subsequent charges are delinquent water and sewer charges that the lien holder has paid and accrued to the lien.)



## FORECLOSURE INFORMATION

THERE ARE 473 OPEN MUNICIPAL LIENS AS  
OF 12/31/14.

*A list of properties eligible for foreclosure was  
submitted to the Clerk/Administrator for review.*

## Third Party Premium Trust Accounts As of 2014

**54:5-33. Payment; resale; premium to escheat after five years**

Payment for the sale shall be made before the conclusion of the sale, or the property shall be resold. Any premium payment shall be held by the collector and returned to the purchaser of the fee if and when redemption is made. If redemption is not made within five years from date of sale the premium payment shall be turned over to the treasurer of the municipality and become a part of the funds of the municipality.

*Premium is kept in an interest bearing account. The municipality keeps the interest earned.*

	<u>2010</u>	<u>2011</u>	<u>2012</u>	<u>2013</u>	<u>2014</u>
<b>BALANCE</b>	<b>\$7,500</b>	<b>\$7,400</b>	<b>\$70,300</b>	<b>\$12,700</b>	
01/01/2014					
<b>2014</b>					<b>\$570,200</b>
<b>TAX SALE</b>					
<b>PAYMENTS</b>	0	3,000	45,800	5,800	357,200
<b>RESOLUTION</b>					
#2014-177	5,400				
<b>BALANCE</b>					
12/31/14	<b>\$2,100</b>	<b>\$4,400</b>	<b>\$24,500</b>	<b>\$6,900</b>	<b>\$213,000</b>

PREMIUM IN THE AMOUNT OF \$5,400.00 FROM LIEN #2010-130 WHICH WAS FORECLOSED BY A THIRD PARTY LIEN HOLDER WAS TURNED OVER TO THE TOWNSHIP TREASURER TO BECOME PART OF THE FUNDS OF THE MUNICIPALITY IN ACCORDANCE WITH THE PROVISIONS OF NJSA 54:5-33 PER RESOLUTION # 2014-177 ON 7/10/14

*FIGURES DO NOT REFLECT MONEY IN TRANSIT*

**LACEY TOWNSHIP TAX COLLECTORS 2014 CEU REPORT**

NAME CERT #	GENERAL 2-CEU	LEGISLATION 2-CEU	ENFORCEMENT 3-CEU	REPORTING, BILLING, & COLLECTION 2-CEU	TECHNOLOGY (OPTIONAL)	ETHICS 3 CEU'S	TOTAL 15- CEU'S
SHARON SULECKI #T0957	8.5	4	11	12		13.5	49
MELBA MITCHELL #T8023	1	1	4	2.5		4.5	13

Sharon Sulecki was re-certified in 2014

Re-certification must be accomplished every two years by continuing education classes. There are five areas of Tax Collecting that must be attended for designated credits. These are as follows: Legislation, Enforcement, Reporting, Billing & Collection, Ethics and General.

# Tax Collector's Office Staff

**Sharon Sulecki**  
Tax Collector  
Certificate #T0957  
June 1985

**Melba Mitchell**  
Assistant Municipal  
Tax Collector  
Certificate #T8023  
April 9, 2001

**Pam Brown-  
Le Compte**  
Senior Tax Clerk  
PMTC I, II, III  
completed  
Start date 5/1/00

**Michelle Czaszynski**  
Clerk  
PMTC I, II, III  
completed  
Start date 6/1/08

**Angela Comiskey**  
Part time as needed  
PMTC I, II, III  
completed  
Start date 10/16/02