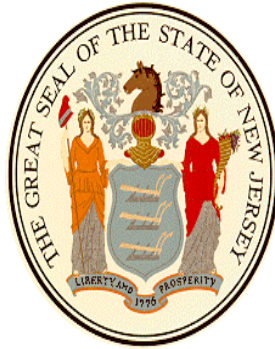




LACEY TOWNSHIP
2006
ANNUAL
TAX COLLECTOR'S
REPORT

**LACEY TOWNSHIP
2006
ANNUAL TAX COLLECTOR'S REPORT**



Due March 1, 2007

Pursuant to N.J.S.A. 54:4-91

**Mark Dykoff, Mayor
Brian Reid, Deputy Mayor
John C. Parker, Jr., Committeeman
Gary Quinn, Committeeman
David Most, Committeeman**

Joseph F. Regatts, CTC, RMC, Tax Collector

**Veronica Laureigh, Municipal Clerk
John F. Adams, Chief Financial Officer
John F. Adams, Administrator
George Gilmore, Township Solicitor
Douglas Gannon, Municipal Auditor**

Carol S. Benson, CTC, Deputy Tax Collector

Please Note:

The figures in this report are unaudited.

Respectfully Submitted,

*Joseph F. Regatts, CTC, RMC
Tax Collector*

*Special Thanks to:
Melba Mitchell
For Designing this Report*

Table of Contents

Lacey Township District Summary.....	1
2006 Tax Levy.....	2
2006 Levy Adjustments and Transfers to Lien.....	2
Gross Tax Levy History.....	3
Total Cash Received.....	4
Current Taxes Collected.....	4
Overpayments.....	4
2006 Collections and Balance with Adjustments.....	5
Tax Collections in Percentages.....	6
A 25 Year History of Percentage, Rate and Ratio.....	7
History of Tax Rates & Ratios *.....	8
Lacey Twp Tax Rate Breakdown *.....	9
Ratables *.....	10
SR1A's Processed *.....	11
15 Largest Taxpayers *.....	12
Comparison of County Residential Assessments**.....	13
Ocean County Percentage of Collection for 2006.....	14
Tax Ratio History.....	15
Interest Collected from Delinquent Taxes.....	16
Miscellaneous Revenue.....	17
Real Estate Searches.....	18
2006 Tax Sale Information.....	19
Breakdown of Certificates Sold.....	20
Financial Status of Township Liens.....	21
Lacey Municipal Utilities Authority; Third Party Lien Data.....	22
Foreclosure Information.....	23
Third Party Premium Trust Accounts As of 12/31/06.....	24
Lacey Township Tax Collectors 2006 C.E.U. Report.....	25
Tax Collectors Office Staff.....	26

* provided by Tax Assessor's office

** provided by Ocean County Tax Board

LACEY TOWNSHIP DISTRICT SUMMARY

Lacey Township continues to grow. Our assessed value by the end of 2006 was over 1.7 billion dollars. The breakdown of properties follows:

TAXABLE PROPERTIES

TYPE	2005	ASSESSED VALUE 2005	2006	ASSESSED VALUE 2006
Residential properties	11,100	\$1,448,942,600	11,185	\$1,480,007,500
Vacant Land	4,563	46,132,800	4,407	43,873,700
Commercial	247	123,632,100	252	124,644,200
Industrial	38	64,705,600	39	65,312,100
Farms (regular)	9	1,943,100	8	1,604,500
Farms (qualified)	14	849,900	11	848,500
Public Utility	1	4,090,393	1	3,218,580
Apartment			1	1,295,000
TOTAL	15,972	\$1,690,296,493	15,904	\$1,720,804,080

In addition to the taxable properties above, the Township has the following exempt properties

EXEMPT PROPERTIES

TYPE	2005	ASSESSED VALUE 2005	2006	ASSESSED VALUE 2006
Public Property	2,327	\$47,543,400	2,380	\$43,441,900
Miscellaneous (Disabled vets, etc)	267	16,309,700	246	15,570,000
Public Schools	47	37,364,300	47	37,364,300
Charitable	23	10,442,800	23	10,451,100
Cemetery	1	145,700	2	224,700
TOTAL	2,665	\$111,805,900	2,698	\$107,052,000

Taxpayers Receiving Deductions per Tax Duplicate

TYPE	2005	TOTAL AMT 2005	2006	TOTAL AMT 2006
Senior Citizen	653	163,250	602	150,500
Disabled Persons	101	25,250	103	25,750
Veterans & Widow of Vets	1871	467,750	1814	453,500
Surviving Spouse	15	3,750	13	3,250
TOTAL	2,640	\$660,000	2532	\$633,000

2006 Tax Levy

Gross Tax.....\$53,640,207.19

Utility.....\$ 100,516.25

Sub-Total.....\$53,740,723.44

Added Assessment.....\$527,073.28

Grand Total 2006 Levy.....\$54,267,796.72

2006 Levy Adjustments and Transfer to Lien

Grand Total 2006 Levy.....\$54,267,796.72

2006 Billing Adjustments Including Transfer Liens..
.....\$ (40,397.67)

**Total Balance Levy After Adjustment and Transfer
to Lien.....\$54,227,399.05**

GROSS TAX LEVY HISTORY

YEAR	AMOUNT
1982	\$8,898,968.98
1983	\$8,287,833.00
1984	\$8,278,862.01
1985	\$9,147,806.47
1986	\$10,623,128.51
1987	\$12,820,547.99
1988	\$17,369,740.16
1989	\$20,002,297.36
1990	\$23,212,402.00
1991	\$20,386,393.70
1992	\$21,002,977.97
1993	\$23,029,063.16
1994	\$24,054,575.31
1995	\$24,829,971.57
1996	\$27,164,722.64
1997	\$28,013,056.52
1998	\$29,921,934.62
1999	\$32,099,690.68
2000	\$33,820,187.01
2001	\$36,485,904.64
2002	\$40,573,259.86
2003	\$44,967,097.36
2004	\$48,278,910.48
2005	\$50,891,086.93
2006	\$54,368,312.97

TOTAL CASH RECEIVED
(Through the Tax Office)

2006	\$54,640,089.87
2005.....	\$51,602,882.23
2004.....	\$48,720,089.19
2003.....	\$45,617,061.97
2002.....	\$41,166,817.28
2001.....	\$37,311,884.11
2000.....	\$34,166,639.53
1999.....	\$32,437,614.52
1998	\$30,258,246.98
1997.....	\$29,889,624.83
1996.....	\$27,700,673.23

CURRENT TAXES COLLECTED (NET)

2006	\$53,726,207.97
2005.....	\$50,508,949.84
2004.....	\$47,801,737.17
2003.....	\$44,552,831.25
2002.....	\$39,979,194.48
2001.....	\$36,058,664.76
2000.....	\$33,402,878.24
1999.....	\$31,243,958.55
1998	\$28,862,566.81
1997.....	\$27,345,090.56
1996.....	\$26,486,004.44

OVERPAYMENTS

2006	\$ 0.00
2005.....	\$ 3,180.77
2004.....	\$14,235.81
2003.....	\$ 1,087.25
2002.....	\$ 909.09
2001.....	\$ 4,301.72
2000.....	\$ 1,149.06
1999.....	\$11,160.61
1998	\$10,789.18
1997.....	\$ 1,845.62
1996.....	\$ 863.01

2006 COLLECTIONS

Prepaid 2006 Taxes Paid in 2005.....	\$433,530.87
2006 Taxes Collected in 2006.....	\$52,696,088.97
Senior Citizen and Veterans Deductions Paid by the State.....	\$632,756.25
Subtotal.....	<u>\$53,762,376.09</u>
2006 Journal Entries adjusted in 2005.....	\$(648.78)
2006 Journal Entries.....	\$(35,519.34)
Credits to be Refunded.....	\$ (0.00)
Net Collections	<u>\$53,726,207.97</u>

2006 BALANCE

Net Adjusted 2006 Levy From Page 2.....	\$54,227,399.05
Net Collected.....	\$53,726,207.97
2006 Balance as of December 31, 2006.....	<u>\$501,191.08</u>

Township of Lacey **Tax Collections in Percentages**

2006.....	99.00%*
2005.....	99.22%
2004.....	98.72%
2003.....	99.07%
2002.....	98.39%
2001.....	98.40%
2000.....	98.77%
1999.....	99.17%
1998(accelerated tax sale year).....	99.87%
1997(accelerated tax sale year).....	99.70%
1996.....	97.50%
1995.....	96.88%

Lacey can be proud of its collection percentage. One of my long-standing goals was to have one of the highest percentages of collection in the County. This year we were among the highest in the County with the cooperation of the governing body we were able to achieve that goal. Our percentage is also among one of the highest in the state!

* Unaudited

**A TWENTY-FIVE YEAR HISTORY OF PERCENTAGE OF
COLLECTIONS RATE AND TAX RATE FOR \$100 OF
EVALUATION IN LACEY TOWNSHIP**

YEAR	PERCENT	TAX RATE	REAP	LOCAL PURPOSE RATE	LOCAL PURPOSE AMOUNT
1982	91.15%	1.961		0.110	\$492,129.52
1983	86.51%	1.816		0.110	\$496,000.00
1984	94.18%	1.816		0.112	\$469,235.53
1985	94.56%	1.898		0.111	\$512,853.27
1986	96.00%	2.027		0.110	\$544,967.91
1987	96.93%	2.304		0.098	\$525,000.00
1988	96.70%	2.972		0.110	\$618,388.75
1989	95.44%	3.279		0.115	\$681,281.00
1990	95.19%	3.709		0.109	\$669,313.13
1991	94.70%	1.332			\$0.00
1992	95.73%	1.366		0.038	\$589,658.39
1993	95.94%	1.539		0.108	\$1,613,634.72
1994	96.70%	1.642		0.113	\$1,650,169.45
1995	96.88%	1.674		0.112	\$1,666,937.94
1996	97.50%	1.821		0.116	\$1,719,732.06
1997	99.70%	1.856	0	0.115	\$1,731,160.75
1998	99.87%	1.949	0	0.115	\$1,749,533.43
1999	99.17%	2.075	0	0.115	\$1,780,384.72
2000	98.77%	2.140	0	0.142	\$2,221,577.80
2001	98.40%	2.274	2.266	0.142	\$2,300,474.04
2002	98.39%	2.479	0	0.174	\$2,810,868.77
2003	99.07%	2.716	0	0.194	\$3,200,730.26
2004	99.01%	2.868	0	0.203	\$3,387,886.40
2005	99.12%	2.976	0	0.233	\$3,953,556.01
2006	99.00%	3.123	0	0.265	\$4,569,686.86

The Regional Efficiency Aid Program (R.E.A.P.) was created and funded by the State to encourage local governments to share services. The Lacey School System applied and was granted aid for sharing services with the Township. This resulted in a savings to the residential taxpayers of \$.008 per hundred (\$80,994.89 in taxes) on the 2001 Tax Rate.

Township Of Lacey

Tax Assessor's Office

TAX RATES AND RATIOS

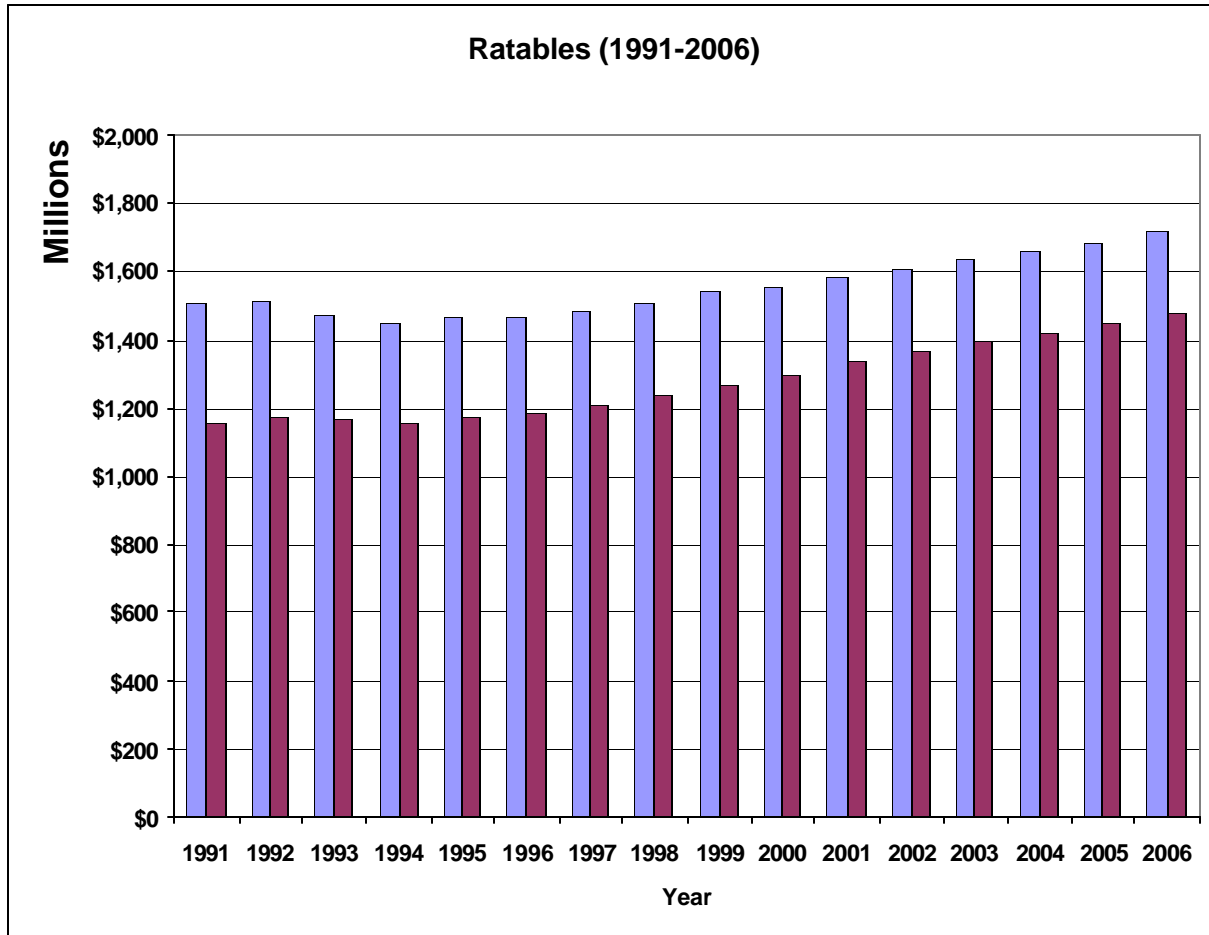
<u>Year</u>	<u>Rate</u>	<u>Ratio</u>	<u>Revaluation</u>		
1965	1.79		1991	1.332	89.52
1966	1.86		1992	1.366	95.99
1967	1.92		1993	1.539	99.76
1968	1.73		1994	1.642	97.49
1969	1.84		1995	1.674	95.52
1970	1.94		1996	1.821	96.53
1971	2.48		1997	1.856	95.68
1972	2.03		1998	1.949	95.17
1973	2.03		1999	2.075	95.80
<u>Revaluation</u>			2000	2.140	94.94
1974	1.20		2001	2.274	90.19
1975	1.78		2002	2.479	83.77
1976	1.76		2003	2.716	75.11
1977	1.47		2004	2.868	64.82
1978	1.51		2005	2.976	55.82
1979	1.53		2006	3.123	47.49
1980	1.57				
<u>Revaluation</u>					
1981	2.077	108.93			
1982	1.961	99.46			
1983	1.816	92.61			
1984	1.816	90.18			
1985	1.898	83.20			
1986	2.027	78.46			
1987	2.304	67.84			
1988	2.972	51.63			
1989	3.279	41.32			
1990	3.709	37.46			

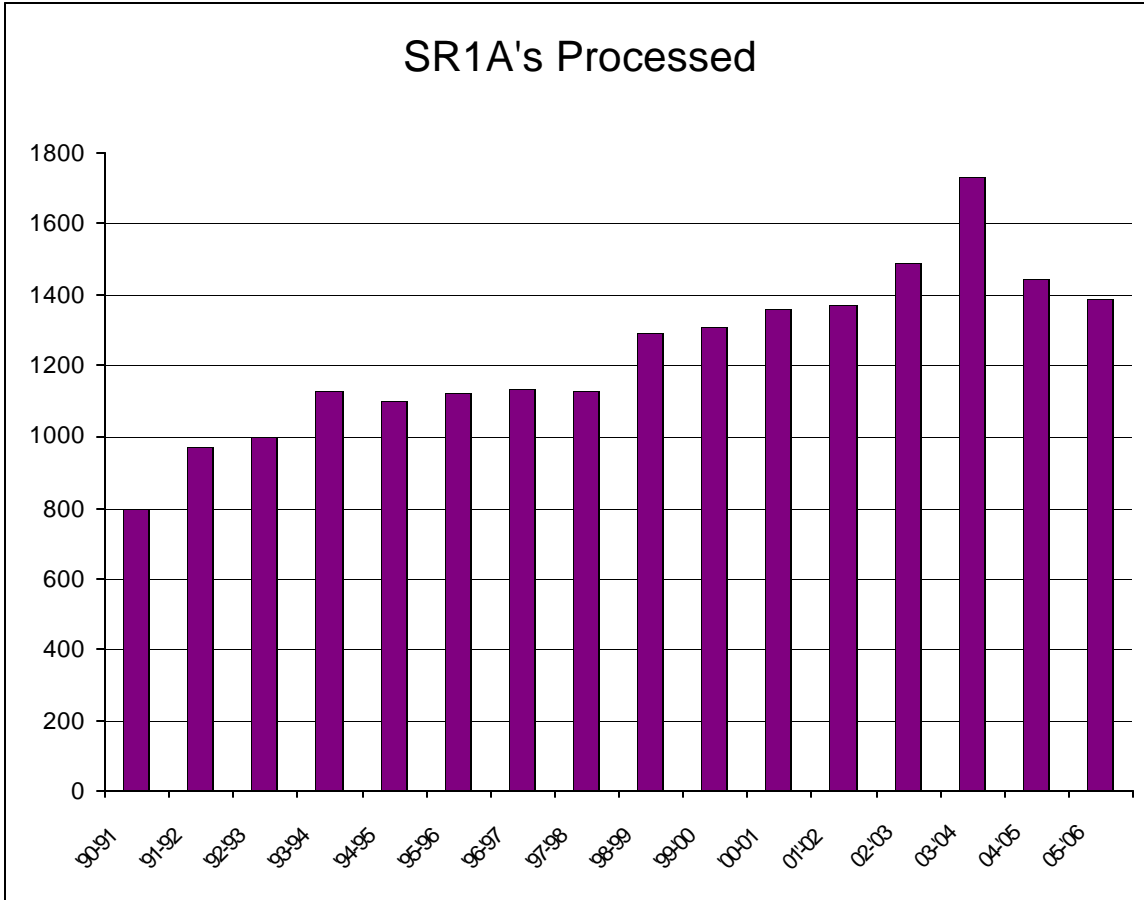
LACEY TOWNSHIP TAX RATE BREAKDOWN

YEAR	COUNTY	LOCAL	LIBRARY	HEALTH	SCHOOL	OPEN SPACE	REAP	TOTAL
1991	0.406	0.000	0.033	0.012	0.881			1.332
1992	0.404	0.038	0.034	0.013	0.877			1.366
1993	0.417	0.108	0.037	0.012	0.965			1.539
1994	0.463	0.113	0.041	0.014	1.011			1.642
1995	0.476	0.112	0.044	0.016	1.026			1.674
1996	0.472	0.116	0.045	0.015	1.173			1.821
1997	0.484	0.115	0.047	0.016	1.194			1.856
1998	0.486	0.114	0.050	0.018	1.269	0.012		1.949
1999	0.498	0.115	0.050	0.018	1.382	0.012		2.075
2000	0.491	0.142	0.049	0.018	1.427	0.013		2.140
2001	0.528	0.144	0.052	0.020	1.516	0.014	\$0.008	2.274
2002	0.539	0.174	0.055	0.022	1.675	0.014		2.479
2003	0.547	0.194	0.058	0.024	1.875	0.016		2.716
2004	0.557	0.203	0.06	0.026	2.003	0.019		2.868
2005	0.576	0.233	0.061	0.026	2.059	0.021		2.976
2006	0.595	0.265	0.064	0.026	2.147	0.026		3.123

Ratable Base Comparison (year by year)

Ratable Year	Total Ratables	Class 2 Ratables	Ratable Line Items	Avg. Value	Class 2 Line Items	Avg. Class 2 Values
1991	\$1,510,001,800	\$1,158,156,500	17,316	\$87,203	9,442	\$122,660
1992	\$1,516,215,500	\$1,174,314,700	17,328	\$87,501	9,545	\$123,029
1993	\$1,471,719,800	\$1,166,340,000	17,233	\$85,401	9,637	\$121,027
1994	\$1,446,510,500	\$1,152,273,400	17,077	\$84,705	9,764	\$118,012
1995	\$1,465,141,700	\$1,173,863,800	16,854	\$86,931	9,881	\$118,800
1996	\$1,468,006,200	\$1,185,811,400	16,640	\$88,222	10,004	\$118,534
1997	\$1,485,224,200	\$1,209,868,600	16,509	\$89,965	10,137	\$119,352
1998	\$1,511,981,100	\$1,235,420,000	16,431	\$92,020	10,252	\$120,505
1999	\$1,537,512,200	\$1,266,227,200	16,305	\$94,297	10,382	\$121,964
2000	\$1,552,796,200	\$1,299,171,300	16,257	\$95,516	10,517	\$123,531
2001	\$1,583,114,800	\$1,336,562,000	16,250	\$97,422	10,679	\$125,158
2002	\$1,607,657,300	\$1,365,888,500	16,134	\$99,644	10,803	\$126,436
2003	\$1,636,098,700	\$1,397,698,700	16,042	\$101,988	10,933	\$127,842
2004	\$1,659,921,800	\$1,420,574,700	16,006	\$103,706	11,005	\$129,084
2005	\$1,686,206,100	\$1,448,942,600	15,971	\$105,579	11,100	\$130,535
2006	\$1,717,585,500	\$1,480,007,500	15,903	\$108,004	11,185	\$132,321





The Sampling Period for SR1A's is from July 1 thru June 30
 99/'00 was amended during September 2000 as the county did not send us all the recorded deeds for this sampling period.

**LACEY TOWNSHIP'S
15 LARGEST TAXPAYERS
AS OF JANUARY 1, 2006**

#	Owner	Block	Lot	Land	Improvement	Total
1	Amergen Energy Co., LLC	VARIOUS				\$59,015,800
2	JCP&L	VARIOUS				\$22,827,800
3	Piedmont Associates	409	2.01	\$1,083,500	\$5,982,400	\$7,065,900
4	New Jersey Bell/Verizon	319	1	\$311,100	\$938,900	
		6001	1		\$3,218,580	\$4,468,580
5	Geriatric & Medical Services	VARIOUS				\$2,701,300
6	Partners Limited, LLC	1524	1.01	\$324,400	\$2,318,100	\$2,640,500
7	WaWa, Inc	VARIOUS				\$2,538,600
8	Stephen A. & Elizabeth Hutler	VARIOUS				\$2,143,900
9	David & Dawn Giombetti	VARIOUS				\$2,136,900
10	PR Lacey LLC	VARIOUS				\$1,898,100
11	Donato D'Onofrio	281	1.01	\$305,500	\$1,550,500	\$1,856,000
12	Henriques Properties, LLC	VARIOUS				\$1,839,800
13	Cavalier, Jennifer	VARIOUS				\$1,824,200
14	Ritchie, Richard	VARIOUS				\$1,818,700
15	Jeffrey Connell, et als	VARIOUS				\$1,682,800

Theresa Poznanski, CTA
Tax Assessor
Township of Lacey

COMPARISON OF MUNICIPALITIES IN OCEAN COUNTY
OF MUNICIPAL TAX RATE, AVERAGE RESIDENTIAL
ASSESSMENTS AND AVERAGE RESIDENTIAL TAX BILL
FOR THE YEAR 2006

DISTRICT	MUNICIPAL TAX RATE	AVERAGE RESIDENTIAL* ASSESSMENT	AVERAGE RESIDENTIAL* MUNICIPAL TAXES
PLUMSTED	0.123	149,388	183.75
LACEY	0.265	132,321	350.65
MANCHESTER	0.641	103,628	664.26
EAGLESWOOD**	0.260	287,414	747.28
SEASIDE HEIGHTS**	0.937	81,481	763.48
BERKELEY	0.736	107,235	789.25
DOVER	0.686	136,464	936.14
OCEAN	0.352	277,271	975.99
TUCKERTON	0.463	216,724	1,003.43
BARNEGAT LIGHT**	0.123	828,424	1,019.00
BARNEGAT	0.866	121,776	1,054.58
LT. EGG HARBOR	0.376	282,122	1,060.78
BRICK	0.853	132,838	1,133.11
PT. PLEASANT BEACH	0.633	182,764	1,156.90
PT. PLEASANT BORO	0.738	161,579	1,192.45
JACKSON	0.793	150,432	1,192.93
LAKESWOOD**	0.411	291,618	1,198.55
BEACHWOOD	1.134	106,543	1,208.20
ISLAND HEIGHTS	0.332	380,457	1,263.12
OCEAN GATE	0.538	239,002	1,285.83
SHIP BOTTOM	0.259	503,078	1,302.97
SURF CITY	0.201	650,963	1,308.44
SOUTH TOMS RIVER**	0.617	214,066	1,320.79
PINE BEACH	0.419	317,227	1,329.18
LAVALETTE	0.229	682,083	1,516.97
STAFFORD	0.533	296,450	1,580.08
LAKEHURST**	0.762	219,374	1,671.63
LONG BEACH	0.200	870,122	1,740.24
HARVEY CEDARS**	0.178	1,112,209	1,979.73
BEACH HAVEN	0.322	650,858	2,095.76
SEASIDE PARK	0.662	326,514	2,161.52
BAY HEAD	0.236	919,606	2,170.27
MANTOLOKING	0.242	1,823,642	4,413.21
AVERAGES	0.488	392,597	1,327.75

TABLE OF AGGREGATE EXTRACTED FROM ABSTRACT OF RATABLES
LACEY TOWNSHIP ENJOYS THE SECOND LOWEST MUNICIPAL TAX RATE

*Exclusive of special district and/or municipal open space taxes

**Reassessment/Revaluation

Ocean County Percentage of Collections for 2006

County Average	98.14%
Municipality	Percentage
Little Egg Harbor***	99.97%
Seaside Heights***	99.82%
Mantoloking	99.65%
Barnegat Light	99.26%
Long Beach**	99.24%
Harvey Cedars	99.23%
Beach Haven Boro^	99.04%
Lacey Township	99.00%
Manchester*	98.99%
Stafford Township	98.92%
Bay Head Boro	98.86%
Waretown	98.78%
Barnegat**	98.67%
Lavellette Boro	98.64%
Surf City	98.57%
Jackson	98.56%
Berkeley Township	98.24%
Dover Township**	98.17%
Pt Pleasant Beach	98.13%
Brick Township**	98.08%
Plumsted	98.03%
Seaside Park**	98.00%
Ship Bottom	98.00%
Pine Beach***^	97.80%
Lakehurst	97.59%
Beachwood^	97.55%
Island Heights	97.49%
Pt. Pleasant Boro	97.38%
Tuckerton	96.92%
So. Toms River**	96.19%
Ocean Gate	96.05%
Lakewood**	95.65%
Eagleswood^	94.14%

* Fiscal Year
 ** Approximate Figure
 *** Participated in an Accelerated tax sale
 ^ figures from 2004/2005

**Below is listed a history of Tax Ratio
as compared with Assessed Value to
True Value of 100% evaluation.**

Year	Ratio
1986	83.200
1987	78.460
1988	67.840
1989	51.630
1990	41.320
1991	37.460
1992	89.520
1993	95.099
1994	99.760
1995	97.490
1996	95.520
1997	96.530
1998	95.170
1999	95.800
2000	94.940
2001	90.199
2002	83.770
2003	75.110
2004	64.820
2005	55.820
2006	47.490

Interest Collected FROM DELINQUENT TAXES

2006.....	\$90,214.71
2005.....	\$ 88,045.30
2004.....	\$ 96,001.46
2003.....	\$102,209.12
2002.....	\$ 97,132.86
2001.....	\$ 96,301.04
2000.....	\$ 83,886.72
1999.....	\$ 70,730.89
1998.....	\$ 82,536.78
1997.....	\$127,642.38
1996.....	\$115,354.81
1995.....	\$ 142,149.04
1994.....	\$129,125.52

MISCELLANEOUS REVENUE

Revenue	Total
Certificates of Redemption @\$25.00	\$1,325.00
NSF Charge @\$20.00 per returned check	\$580.00
Duplicate Tax Bill	\$325.00
Year End Penalty	\$0.00
Copies	\$109.75
Third Party Lien	\$343,962.31
LMUA Trust Accounts (Including Lien Redemptions)	\$76,588.76
Cost Collected Prior to Sale	\$16,384.48
Duplicate Tax Sale Certificates	\$0.00
In Lieu(Assisted Living, block 630 Lot 7.01X)	\$33,621.17
Searches	\$360.00
Unallocated Receipts	\$139,941.23
Electronic File Fees	\$1,200.00
Twp Liens-Recording & Search Fee	\$1,210.00

Real Estate Searches

2006.....	\$ 360.00
2005.....	\$ 200.00
2004.....	\$ 210.00
2003.....	\$ 300.00
2002.....	\$ 402.00
2001.....	\$ 500.00
2000.....	\$ 662.00
1999.....	\$ 1,060.00
1998.....	\$ 1,564.00
1997.....	\$ 2,137.00
1996.....	\$ 2,590.00
1995.....	\$ 3,116.00
1994.....	\$ 4,834.00

Tax Searches are done in connection with sales, refinance, foreclosures, bankruptcies, and fire damaged

2006 Tax Sale Statistics Are As Follows:

First Publication (Mailed in Lieu)	January 11, 2006
Second Publication (Mailed in Lieu)	January 18, 2006
Third Publication	January 26, 2006
Fourth Publication	February 2, 2006
Certificates Sold To Third Party Lienholders	
Number of Certificates	158
LMUA Charges collected at sale	\$62,996.84
Taxes	\$92,206.40
Interest & Cost of Sale	\$9,451.75
Total Third Party Liens	\$164,654.99
Premium collected at Tax Sale	\$349,600.00
Certificates Sold To The Township of Lacey	
Number of Certificates	0
Water Charges	\$0.00
Sewer Charges	\$0.00
Taxes	\$0.00
Interest & Cost of Sale	\$0.00
Total Township Liens	\$0.00
<u>Grand Totals</u>	
Certificates Sold	158
Amount	\$164,654.99

Breakdown of Certificates Sold

The statistics of the sale are as follows:

	<u>2006</u>	<u>2005</u>	<u>2004</u>	<u>2003</u>	<u>2002</u>
Actual Advertised Tax Delinquents	1154	1138	1718	1022	958
Certificates Sold to Third Party Lien Holders	158	127	162	222	263
Certificates Sold to Township	0	132	24	0	51
Total Certificates Created	158	259	186	222	314

Premium collected at the 2006 Tax Sale	\$349,600.00
---	---------------------

Cost of Sale Revenue Prior to Sale Pursuant to Statutes

COLLECTED AT THE TAX OFFICE	\$9,169.48
COLLECTED AT THE LMUA	\$7,215.00
TOTAL COLLECTED	\$16,384.48

Financial Status of Township Liens

Lacey Township Tax Title Liens

	<u>2006</u>	<u>2005</u>	<u>2004</u>	<u>2003</u>	<u>2002</u>	<u>2001</u>	<u>2000</u>	<u>1999</u>
Certificates on hand as of 1/1/06	190	95	79	109	108	110	44	190
Certificates created as of 2/10/06	0	131	24	0	51	8	76	0
Certificates Redeemed	-8	-25	-7	-6	-5	-10	-10	-118
Certificates Foreclosed	0	0	0	-23	-44	0	0	-25
Certificates Canceled by Resolution	-4	-11	-1	-1	-1	0	0	-3
Certificates on Hand 12/31/06	178	190	95	79	109	108	110	44

Tax Title Lien Balance

Balance as of December 31, 2006	\$ 10,349.62
Balance as of December 31, 2005	\$ 9,527.53
Balance as of December 31, 2004	\$ 4,335.28
Balance as of December 31, 2003	\$ 5,631.67
Balance as of December 31, 2002	\$ 6,951.55
Balance as of December 31, 2001	\$ 24,848.90
Balance as of December 31, 2000	\$ 20,415.38
Balance as of December 31, 1999	\$ 7,199.79
Balance as of December 31, 1998	\$ 39,657.89
Balance as of December 31, 1997	\$ 10,349.62
Balance as of December 31, 1996	\$ 18,175.58
Balance as of December 31, 1995	\$ 22,400.51
Balance as of December 31, 1994	\$132,673.54

Amount (In Dollars) In Tax Title Liens

Balance as of 1/1/06	\$ 9,527.53
2006 Taxes Transferred to Liens at Tax Sale	\$ 0.00
Interest and Cost at Tax Sale	\$ 0.00
2006 Taxes Transferred to Liens at year end	\$ 1,899.36
Subtotal	\$11,426.89
Liens Redeemed	\$ (752.61)
Liens Cancelled	\$ (324.66)
Taxes Cancelled including Foreclosure	\$ 0.00
Liens Balance as of 12/31/06	\$10,349.62

Lacey Municipal Utilities Authority

	2006	2005	2004	2003	2002
LMUA Liens Redeemed	\$0.00	\$0.00	\$0.00	\$0.00	0.00
LMUA Collected In Trust	\$62,996.84	\$36,571.80	\$53,660.62	\$141,014.04	\$117,189.93
LMUA Payment Collected Prior to Tax Sale	\$13,857.22	\$53,096.95	\$30,755.28	\$22,677.09	\$114,975.95
TOTAL COLLECTED	\$76,854.06	\$89,668.75	\$84,415.90	\$163,691.13	\$232,165.88

THIRD PARTY LIEN DATA

Collected in Trust for Outside Lienholders * **\$343,962.31**

**This total reflects money paid by the property owner to the lien holder through this office. This money has no affect on collections of Lacey Township and is only held in trust.*

FORECLOSURE INFORMATION

RESOLUTION #03-175 TO FORECLOSE 33 TOWNSHIP LIENS WAS PASSED ON 05/22/03 AND IS ONGOING.

RESOLUTION # 04-348 TO FORECLOSE 22 TOWNSHIP LIENS WAS PASSED ON 12/9/04 AND IS ONGOING.

RESOLUTION #05-311 TO FORECLOSE ON 18 TOWNSHIP LIENS WAS PASSED ON 10/27/05 IS ONGOING.

RESOLUTION#06-334 TO FORECLOSE ON 21 TOWNSHIP LIENS WAS PASSED O 11/21/06 IS ONGOING.

Foreclosures

Foreclosure Number	Number of Original Filing	Number of Final Judgment	Judgment Date	Total Assessed Value	Total Liens Cancelled in 2006	Redeemed in 2006
F-21691-03	33	IN PROGRESS				1
F-14917 -05	22	IN PROGRESS FROM 2004				
NO NUMBER ISSUED AS OF 12/31/05	18	IN PROGRESS FROM 2005				
NO NUMBER ISSUED AS OF 11/21/06	21	IN PROGRESS FROM 2006				

In Rem Foreclosure Costs Collected

Attorney Trust.....\$ 850.00

Search Fee Trust.....\$ 360.00

PUBLISHING TRUST.....\$ 0.00

Third Party Premium Trust Accounts As of 2006

54:5-33. Payment; resale; premium to escheat after five years

Payment for the sale shall be made before the conclusion of the sale, or the property shall be resold. Any premium payment shall be held by the collector and returned to the purchaser of the fee if and when redemption is made. If redemption is not made within five years from date of sale the premium payment shall be turned over to the treasurer of the municipality and become a part of the funds of the municipality.

Premium is kept in an interest bearing account. The municipality keeps the interest earned.

	<u>2003</u>	<u>2004</u>	<u>2005</u>	<u>2006</u>
BALANCE	\$7,800.00	\$4,400.00	\$101,100.00	
01/01/2006				
2006	\$00.00	\$00.00	\$00.00	\$349,600.00
TAX SALE				
PAYMENT	\$5,000.00	\$1,200.00	\$89,600.00	\$212,900.00
BALANCE	\$2,800.00	\$3,200.00	\$11,500.00	\$136,700.00

FIGURES DO NOT REFLECT MONEY IN TRANSIT

LACEY TOWNSHIP TAX COLLECTORS 2006 CEU REPORT

NAME CERT #	GEN- ERAL 2-CEU	LEGISLA- TION 2-CEU	ENFORCE- MENT 3-CEU	REPORTING 2-CEU	ETHICS 3-CEU	INFORMATION- TECHNOLOGY (OPTIONAL)	TOTAL 15- CEU'S
JOSEPH REGATTS #T0161	1-3/10/06 1-5/17/06 2-9/11/06 2-9/12/06	2-5/16/06 2-11/14/06	1-5/16/06 1-5/17/06 1.5-9/11/06 1-9/27/06 1-11/14/06	1-5/16/06 1-5/17/06 1-5/17/06 2-7/13/06 1-9/8/06 5-9/12/06 1.5-9/13/06 1-11/14/06	2-9/12/06	1-5/16/06 1-7/13/06 1-9/13/06	29.5 CEU'S
CAROL BENSON #T0554	2-5/18/06		1-5/17/06	1-9/8/06	2-5/18/06		6 CEU'S
MELBA MITCHELL #T8023	1-3/10/06		1-11/15/06	1-11/15/06	1-11/15/06		4 CEU'S
DOROTHY SMITH #T8064			1-11/15/06	2-7/13/06 1-11/15/06	1-11/15/06	1-7/13/06	6 CEU'S

Joseph Regatts & Carol Benson were re-certified in 2006.

Re-certification must be accomplished every two years by continuing education classes. There are five areas of Tax Collecting that must be attended for designated credits. These are as follows: Legislation, Enforcement, Reporting & Billing, Ethics and General.

Tax Collector's Office Staff

Joseph Regatts
Tax Collector
Certificate #161
November 20, 1980

Carol Benson
Deputy Tax Collector
Certificate #554
August 1, 1982
Retired 12/31/06

Melba Mitchell
Supervising Tax Clerk
Certificate # 8023
April 9, 2001
Re-certified in 2005

Dorothy Smith
Principal Tax Clerk
Certificate # 8064
April 2, 2003
Re-certified in 2005

Pam Brown
LeCompte
Senior Tax Clerk
Not Certified
Start date 5/1/00

Angela Comiskey
Interim Tax Clerk
Temporary
Not Certified
Start date 3/23/06
End date 6/9/06

Debra Maggio
Temporary Full Time
Not Certified
Start date 10/10/06